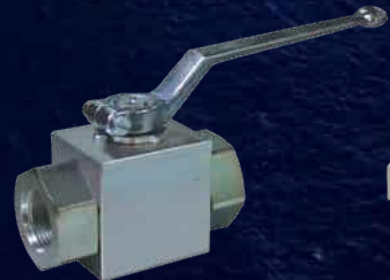


ME HYDRAULICS PRIVATE LIMITED

adding value to customers

Tube Connectors - Tube Clamps - Valves



ISO 9001:2015 Certified Company

www.mehydro.com

M E Hydraulics Pvt. Ltd. - www.mehydro.com
FLARE COUPLINGS / ADAPTORS 37° - DIN EN ISO 8434-2 / SAE J 514

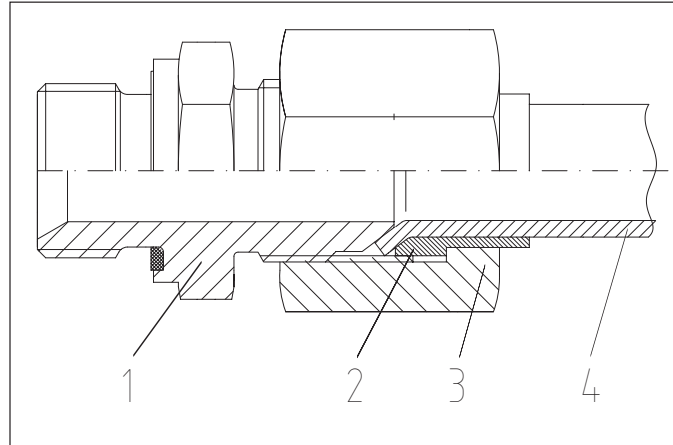
SAE FLARE COUPLINGS - FUNCTION	6.3
NUTS	6.4
SLEEVES - TUBE - METRIC	6.5
SLEEVES - TUBE - INCH	6.6
JIC - 37° - ADAPTORS - STRAIGHT UNIONS	6.7
JIC - 37° - ADAPTORS - 90°-ELBOW CONNECTORS	6.7
JIC - 37° - T-CONNECTORS	6.8
JIC - 37° - ADAPTORS - STRAIGHT - JIC - FEMALE X JIC FEMALE	6.8
JIC - 37° - ADAPTORS - STRAIGHT - JIC - MALE X BSP - MALE	6.9
JIC - 37° - ADAPTORS - STRAIGHT - JIC - MALE X NPT - MALE	6.10
JIC - 37° - ADAPTORS - STRAIGHT - JIC - MALE X BSP - TAPER - MALE	6.11
JIC - 37° - ADAPTORS - STRAIGHT - JIC - FEMALE X BSP - MALE	6.12
JIC - 37° - ADAPTORS - STRAIGHT - JIC - FEMALE X JIC MALE	6.13
JIC - 37° - ADAPTORS - CONED PLUG	6.14
JIC - 37° - ADAPTORS - 90°-ELBOW - JIC - MALE X NPT - MALE	6.15
JIC - 37° - ADAPTORS - 90°-ELBOW - JIC - MALE X BSP - TAPER - MALE	6.16
JIC - 37° - CONNECTIONS - STRAIGHT BULKHEAD CONNECTIONS	6.17
JIC - 37° - STRAIGHT ADAPTORS - JIC - FEMALE X NPT - MALE	6.18
JIC - 37° - ADAPTORS - 90°-ELBOW - JIC - FEMALE X NPT - MALE	6.19
JIC - 37° - ADAPTORS - 90°-ELBOW - JIC - FEMALE X JIC - MALE	6.20
JIC - 37° - TEE-ADAPTORS - JIC - FEMALE X JIC - MALE	6.21
JIC - 37° - TEE-ADAPTORS - JIC - FEMALE X JIC - MALE	6.22
ADJUSTABLE MALE STUD ELBOWS - JIC - MALE X BSP MALE	6.23

Email: sales@mehydro.com

M E HYDRAULICS PVT LTD

www.mehydro.com

SAE J514 & ISO 8434 part 2 fittings
37deg. flare Tube Fittings

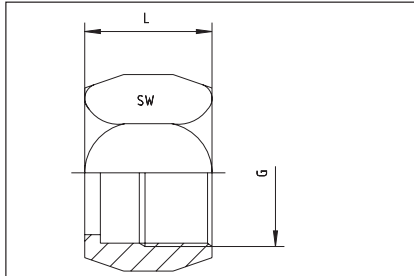


1. BODY 2. FLARE PLUG 3. NUT 4. TUBE

NUTS

for 37°-flare couplings

to SAE J 514 and ISO 8434 part 2

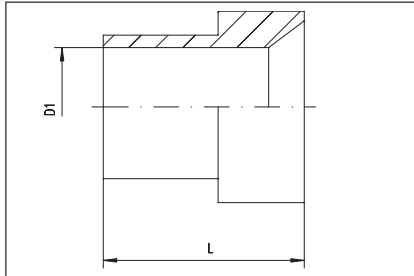


Tube O.D.		Thread G	L	SW	ME Order-Code
mm	in.				
6	1/4"	7/16"-20 UNF	15,5	14	M 37-06-04
8	5/16"	1/2"-20 UNF	17,0	17	M 37-08-05
10	3/8"	9/16"-18 UNF	18,3	19	M 37-10-06
12	1/2"	3/4"-16 UNF	21,3	22	M 37-12-08
14, 15, 16	5/8"	7/8"-14 UNF	24,6	27	M 37-16-10
18, 20	3/4"	1 1/16"-12 UN	25,9	32	M 37-20-12
25	1"	1 5/16"-12 UN	28,4	41	M 37-25-16
28, 30, 32	1 1/4"	1 5/8"-12 UN	31,0	50	M 37-30-20
35, 38	1 1/2"	1 7/8"-12 UN	35,8	60	M 37-38-24
50	2"	2 1/2"-12 UN	44,2	75	M 37-50-32

SLEEVES

for 37°-flare couplings
 Tube - metric

to SAE J 514 and ISO 8434 part 2

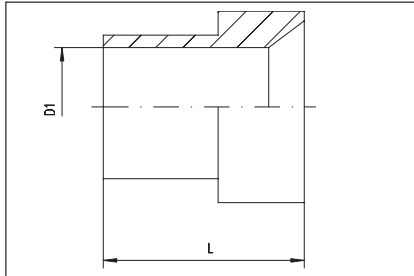


Tube O.D. mm	D1 + Tol.	L	ME Order-Code
6	6	10,4	DR 37-06
8	8	11,2	DR 37-08
10	10	12,7	DR 37-10
12	12	14,2	DR 37-12
14	14	14,0	DR 37-14
15	15	14,0	DR 37-15
16	16	16,8	DR 37-16
18	30	23,1	DR 37-18
20	20	17,3	DR 37-20
25	25	19,8	DR 37-25
28	28	23,0	DR 37-28
30	30	23,1	DR 37-30
32	32	23,0	DR 37-32
35	35	28,4	DR 37-35
38	38	28,4	DR 37-38
50	50	30,2	DR 37-50

SLEEVES

for 37°-flare couplings
Tube - inch

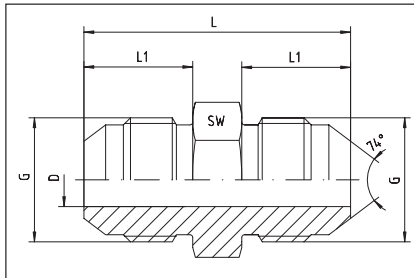
to SAE J 514 and ISO 8434 part 2



Tube O.D.		D1	L	ME Order-Code
in.	mm			
1/4"	6,35	6,53	10,4	DR 37-1/4"
5/16"	7,94	8,13	11,2	DR 37-5/16"
3/8"	9,52	9,73	12,7	DR 37-3/8"
1/2"	12,70	12,88	14,2	DR 37-1/2"
5/8"	15,88	16,08	16,8	DR 37-5/8"
3/4"	19,05	19,28	17,3	DR 37-3/4"
1"	25,40	25,60	19,8	DR 37-1"
1 1/4"	31,75	32,05	23,1	DR 37-1 1/4"
1 1/2"	38,10	38,40	28,4	DR 37-1 1/2"
2"	50,80	51,21	30,2	DR 37-2"

JIC - 37° - ADAPTORS

Straight unions
male - male



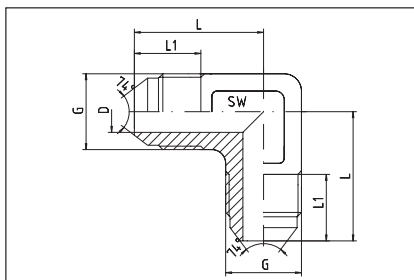
Tube O.D.		Thread G	approx. dimensions				ME Order-Code
mm	in.		L	L1	D	SW	
6	1/4"	7/16"-20 UNF	35,0	14,0	4,5	12	1252510-04-04
8	5/16"	1/2"-20 UNF	35,0	14,0	5,0	14	1252510-05-05
10	3/8"	9/16"-18 UNF	36,0	14,1	7,5	17	1252510-06-06
12	1/2"	3/4"-16 UNF	41,0	16,7	9,5	22	1252510-08-08
14, 15, 16	5/8"	7/8"-14 UNF	48,0	19,3	12,5	24	1252510-10-10
18, 20	3/4"	1 1/16"-12 UN	55,0	21,9	15,0	27	1252510-12-12
25	1"	1 5/16"-12 UN	57,0	23,1	21,5	36	1252510-16-16
28, 30, 32	1 1/4"	1 5/8"-12 UN	61,5	24,3	27,5	46	1252510-20-20
35, 38	1 1/2"	1 7/8"-12 UN	70,0	27,5	33,0	50	1252510-24-24
50	2"	2 1/2"-12 UN	80,0	33,9	45,0	65	1252510-32-32

Reducers on request!

For example: tube 20 to 16 = Order-Code: 1252510-12-10

JIC - 37° - ELBOW-ADAPTORS

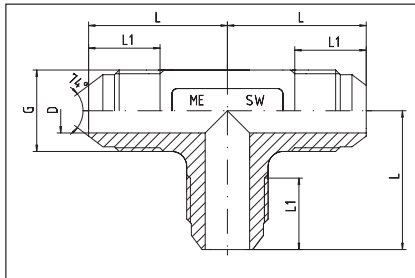
90°-elbow connectors
male - male



Tube O.D.		Thread G	approx. dimensions				ME Order-Code
mm	in.		L	L1	D	SW	
6	1/4"	7/16"-20 UNF	22,5	14,0	4,5	12	1252511-04-04
8	5/16"	1/2"-20 UNF	24,0	14,0	6,0	13	1252511-05-05
10	3/8"	9/16"-18 UNF	27,0	14,1	7,5	14	1252511-06-06
12	1/2"	3/4"-16 UNF	31,0	16,7	10,0	19	1252511-08-08
14, 15, 16	5/8"	7/8"-14 UNF	37,5	19,3	12,5	24	1252511-10-10
18, 20	3/4"	1 1/16"-12 UN	42,0	21,9	15,0	24	1252511-12-12
25	1"	1 5/16"-12 UN	46,0	23,1	21,5	33	1252511-16-16
28, 30, 32	1 1/4"	1 5/8"-12 UN	52,5	24,3	27,5	41	1252511-20-20
35, 38	1 1/2"	1 7/8"-12 UN	59,0	27,5	33,0	48	1252511-24-24
50	2"	2 1/2"-12 UN	77,5	33,9	45,0	65	1252511-32-32

JIC - 37° - T-CONNECTORS

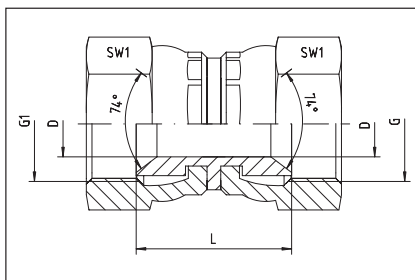
all sides male



Tube O.D.		Thread G	approx. dimensions				ME Order-Code
mm	in.		L	L1	D	SW	
6	1/4"	7/16"-20 UNF	22,5	14,0	4,5	12	1252512-04-04-04
8	5/16"	1/2"-20 UNF	24,0	14,0	6,0	13	1252512-05-05-05
10	3/8"	9/16"-18 UNF	27,0	14,1	7,5	14	1252512-06-06-06
12	1/2"	3/4"-16 UNF	31,0	16,7	10,0	19	1252512-08-08-08
14, 15, 16	5/8"	7/8"-14 UNF	37,5	19,3	12,5	24	1252512-10-10-10
18, 20	3/4"	1 1/16"-12 UN	42,0	21,9	15,5	24	1252512-12-12-12
25	1"	1 5/16"-12 UN	46,0	23,1	21,5	33	1252512-16-16-16
28, 30, 32	1 1/4"	1 5/8"-12 UN	52,5	24,3	27,5	41	1252512-20-20-20
35, 38	1 1/2"	1 7/8"-12 UN	59,0	27,5	33,0	48	1252512-24-24-24
50	2"	2 1/2"-12 UN	77,5	33,9	45,0		1252512-32-32-32

JIC - 37° - ADAPTORS

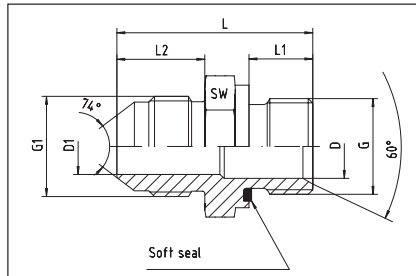
JIC - female - swivel
both sides



Tube O.D.		Thread G1	approx. dimensions			ME Order-Code
mm	in.		L	D	SW1	
6	1/4"	7/16"-20 UNF	21,0	4,0	17	3252511-04-04
8	5/16"	1/2"-20 UNF	21,0	5,0	17	3252511-05-05
10	3/8"	9/16"-18 UNF	24,0	7,0	19	3252511-06-06
12	1/2"	3/4"-16 UNF	25,5	10,0	24	3252511-08-08
14, 15, 16	5/8"	7/8"-14 UNF	30,0	12,0	27	3252511-10-10
18, 20	3/4"	1 1/16"-12 UN	30,0	15,0	32	3252511-12-12
25	1"	1 5/16"-12 UN	35,0	21,0	41	3252511-16-16
28, 30, 32	1 1/4"	1 5/8"-12 UN	35,0	27,5	50	3252511-20-20
35, 38	1 1/2"	1 7/8"-12 UN	40,0	33,0	55	3252511-24-24

JIC - 37° - ADAPTORS

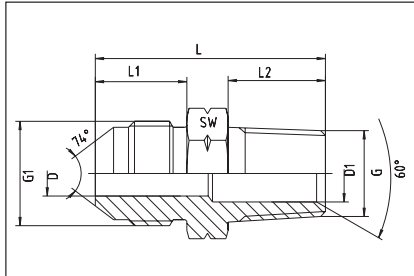
JIC - male
 BSP - male
 with captive soft seal



Tube O.D.		Thread		approx. dimensions							ME Order-Code
mm	in.	G1 = UNF/UN	G = BSP	L	L1	L2	D	D1	SW	G1 x G	
6	1/4"	7/16"-20	1/8"-28	30,0	8	14,0	3,5	3,5	14	1052510-04-02	
6	1/4"	7/16"-20	1/4"-19	34,0	12	14,0	4,0	4,0	19	1052510-04-04	
6	1/4"	7/16"-20	3/8"-19	34,5	12	14,0	8,0	4,0	22	1052510-04-06	
6	1/4"	7/16"-20	1/2"-14	37,5	14	14,0	11,5	4,0	27	1052510-04-08	
8	5/16"	1/2"-20	1/8"-28	30,0	8	14,0	4,5	4,5	14	1052510-05-02	
8	5/16"	1/2"-20	1/4"-19	34,0	12	14,0	5,0	5,0	19	1052510-05-04	
8	5/16"	1/2"-20	3/8"-19	34,5	12	14,0	8,0	5,0	22	1052510-05-06	
8	5/16"	1/2"-20	1/2"-14	37,5	14	14,0	11,5	5,0	27	1052510-05-08	
10	3/8"	9/16"-18	1/8"-28	30,0	8	16,0	4,5	6,0	17	1052510-06-02	
10	3/8"	9/16"-18	1/4"-19	33,0	10	14,0	6,0	6,0	19	1052510-06-04	
10	3/8"	9/16"-18	3/8"-19	34,5	12	14,0	7,5	7,5	22	1052510-06-06	
10	3/8"	9/16"-18	1/2"-14	40,0	14	14,0	12,0	7,5	27	1052510-06-08	
12	1/2"	3/4"-16	1/4"-19	37,0	10	17,0	5,0	9,5	22	1052510-08-04	
12	1/2"	3/4"-16	3/8"-19	41,0	12	17,0	9,0	9,0	22	1052510-08-06	
12	1/2"	3/4"-16	1/2"-14	40,5	14	17,0	9,5	9,5	27	1052510-08-08	
12	1/2"	3/4"-16	3/4"-14	46,0	16	17,0	17,0	9,5	32	1052510-08-12	
14, 15, 16	5/8"	7/8"-14	3/8"-19	42,5	12	19,5	8,0	12,0	24	1052510-10-06	
14, 15, 16	5/8"	7/8"-14	1/2"-14	43,0	14	19,5	12,0	12,0	27	1052510-10-08	
14, 15, 16	5/8"	7/8"-14	5/8"-14	44,5	16	19,5	14,5	12,0	30	1052510-10-10	
14, 15, 16	5/8"	7/8"-14	3/4"-14	46,0	16	19,5	17,0	12,0	32	1052510-10-12	
14, 15, 16	5/8"	7/8"-14	1"-11	50,0	18	19,5	22,5	12,0	41	1052510-10-16	
18, 20	3/4"	1 1/16"-12	1/2"-14	50,0	14	22,0	11,5	15,0	27	1052510-12-08	
18, 20	3/4"	1 1/16"-12	3/4"-14	51,0	16	22,0	15,0	15,0	32	1052510-12-12	
18, 20	3/4"	1 1/16"-12	1"-11	53,0	18	22,0	22,5	15,0	41	1052510-12-16	
18, 20	3/4"	1 1/16"-12	1 1/4"-11	56,5	20	22,0	29,0	15,0	50	1052510-12-20	
25	1"	1 5/16"-12	3/4"-14	53,0	16	23,0	17,5	21,5	36	1052510-16-12	
25	1"	1 5/16"-12	1"-11	53,5	18	23,0	21,5	21,5	41	1052510-16-16	
25	1"	1 5/16"-12	1 1/4"-11	57,5	20	23,0	29,0	21,5	50	1052510-16-20	
25	1"	1 5/16"-12	1 1/2"-11	59,5	22	23,0	33,5	21,0	55	1052510-16-24	
28, 30, 32	1 1/4"	1 5/8"-12	3/4"-14	56,7	16	24,3	17,0	26,5	46	1052510-20-12	
28, 30, 32	1 1/4"	1 5/8"-12	1"-11	55,0	18	24,3	23,0	26,5	46	1052510-20-16	
28, 30, 32	1 1/4"	1 5/8"-12	1 1/4"-11	59,0	20	24,3	29,0	26,5	50	1052510-20-20	
28, 30, 32	1 1/4"	1 5/8"-12	1 1/2"-11	61,0	22	24,3	33,5	26,5	55	1052510-20-24	
28, 30, 32	1 1/4"	1 5/8"-12	2"-11	64,3	25	24,3	46,0	26,5	70	1052510-20-32	
35, 38	1 1/2"	1 7/8"-12	1"-11	71,0	19	27,5	22,5	32,0	50	1052510-24-16	
35, 38	1 1/2"	1 7/8"-12	1 1/4"-11	62,0	20	27,5	29,0	32,0	50	1052510-24-20	
35, 38	1 1/2"	1 7/8"-12	1 1/2"-11	64,0	22	27,5	33,5	32,0	55	1052510-24-24	
35, 38	1 1/2"	1 7/8"-12	2"-11	67,5	25	27,5	46,0	32,0	70	1052510-24-32	

JIC - 37° - ADAPTORS

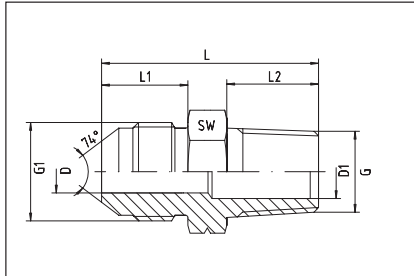
JIC - male
NPT - male



Tube O.D.		Thread		approx. dimensions						ME Order-Code
mm	in.	G1 = UNF/UN	G = NPT	L	L1	L2	D	D1	SW	G1 x G
6	1/4"	7/16"-20	1/8"-27	31,0	14,0	10,0	4,0	4,0	12	1252810-04-02
6	1/4"	7/16"-20	1/4"-18	36,0	14,0	15,0	4,0	4,0	17	1252810-04-04
6	1/4"	7/16"-20	3/8"-18	36,0	14,0	15,3	4,0	9,0	19	1252810-04-06
8	5/16"	1/2"-20	1/8"-27	30,0	14,0	10,0	4,0	4,0	14	1252810-05-02
8	5/16"	1/2"-20	1/4"-18	36,0	14,0	15,0	5,0	5,0	17	1252810-05-04
8	5/16"	1/2"-20	3/8"-18	36,0	14,0	15,3	5,0	9,0	19	1252810-05-06
10	3/8"	9/16"-18	1/8"-27	30,0	14,0	10,0	6,0	4,0	17	1252810-06-02
10	3/8"	9/16"-18	1/4"-18	34,0	14,0	15,0	6,0	6,0	17	1252810-06-04
10	3/8"	9/16"-18	3/8"-18	34,0	14,0	15,3	6,0	6,0	19	1252810-06-06
10	3/8"	9/16"-18	1/2"-14	43,0	14,0	20,0	7,5	13,0	22	1252810-06-08
12	1/2"	3/4"-16	1/4"-18	39,0	17,0	15,0	9,0	5,0	19	1252810-08-04
12	1/2"	3/4"-16	3/8"-18	39,0	17,0	15,3	9,0	9,0	19	1252810-08-06
12	1/2"	3/4"-16	1/2"-14	45,7	17,0	20,0	9,5	9,5	22	1252810-08-08
12	1/2"	3/4"-16	3/4"-14	47,2	17,0	20,0	9,5	17,0	27	1252810-08-12
14, 15, 16	5/8"	7/8"-14	3/8"-18	42,0	19,5	15,3	12,0	9,0	24	1252810-10-06
14, 15, 16	5/8"	7/8"-14	1/2"-14	48,0	19,5	20,0	12,0	12,0	24	1252810-10-08
14, 15, 16	5/8"	7/8"-14	3/4"-14	48,2	19,5	20,0	12,0	18,0	27	1252810-10-12
18, 20	3/4"	1 1/16"-12	3/8"-18	47,0	22,0	15,3	15,0	9,0	27	1252810-12-06
18, 20	3/4"	1 1/16"-12	1/2"-14	52,2	22,0	20,0	15,0	13,5	27	1252810-12-08
18, 20	3/4"	1 1/16"-12	3/4"-14	52,3	22,0	20,0	15,0	15,0	27	1252810-12-12
18, 20	3/4"	1 1/16"-12	1"-11,5	57,5	22,0	25,0	15,0	21,0	36	1252810-12-16
25	1"	1 5/16"-12	1/2"-14	53,2	23,0	20,0	21,0	13,5	36	1252810-16-08
25	1"	1 5/16"-12	3/4"-14	53,0	23,0	20,0	21,0	18,0	36	1252810-16-12
25	1"	1 5/16"-12	1"-11,5	58,0	23,0	25,0	21,0	21,0	36	1252810-16-16
25	1"	1 5/16"-12	1 1/4"-11,5	58,0	23,0	25,5	21,0	31,7	46	1252810-16-20
25	1"	1 5/16"-12	1 1/2"-11,5	62,0	23,0	26,0	21,0	32,0	50	1252810-16-24
28, 30, 32	1 1/4"	1 5/8"-12	1"-11,5	62,0	24,3	25,0	26,5	21,0	46	1252810-20-16
28, 30, 32	1 1/4"	1 5/8"-12	1 1/4"-11,5	62,0	24,3	25,5	26,5	31,7	46	1252810-20-20
28, 30, 32	1 1/4"	1 5/8"-12	1 1/2"-11,5	64,8	24,3	26,0	26,5	38,0	50	1252810-20-24
35, 38	1 1/2"	1 7/8"-12	1 1/2"-11,5	68,0	27,5	26,0	32,0	32,0	50	1252810-24-24
35, 38	1 1/2"	1 7/8"-12	1 1/4"-11,5	66,0	27,5	25,5	31,7	31,7	50	1252810-24-20
50	2"	2 1/2"-12	2"-11,5	72,0	33,9	26,0	45,0	45,0	65	1252810-32-32

JIC - 37° - ADAPTORS

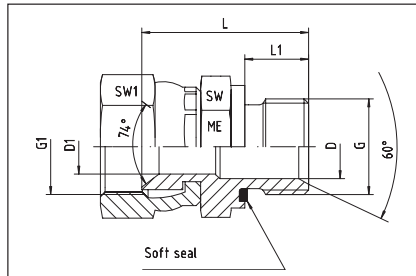
JIC - male
BSP - taper - male



Tube O.D.		Thread		approx. dimensions							ME Order-Code
mm	in.	G1 = UNF/UN	G = keg.	L	L1	L2	D	D1	SW	G1 x G	
6	1/4"	7/16"-20	1/8"-28	29,0	14,0	8	4,0	4,0	12	1252820-04-02	
6	1/4"	7/16"-20	1/4"-19	33,0	14,0	12	4,0	4,0	17	1252820-04-04	
6	1/4"	7/16"-20	3/8"-19	32,7	14,0	12	4,0	9,0	19	1252820-04-06	
8	5/16"	1/2"-20	1/8"-28	28,0	14,0	8	4,0	4,0	14	1252820-05-02	
8	5/16"	1/2"-20	1/4"-19	33,0	14,0	12	5,0	5,0	17	1252820-05-04	
8	5/16"	1/2"-20	3/8"-19	32,7	14,0	12	5,0	9,0	19	1252820-05-06	
10	3/8"	9/16"-18	1/8"-28	28,0	14,0	8	6,0	4,0	17	1252820-06-02	
10	3/8"	9/16"-18	1/4"-19	31,0	14,0	12	6,0	6,0	17	1252820-06-04	
10	3/8"	9/16"-18	3/8"-19	30,7	14,0	12	6,0	6,0	19	1252820-06-06	
10	3/8"	9/16"-18	1/2"-14	37,0	14,0	14	7,5	13,0	22	1252820-06-08	
12	1/2"	3/4"-16	1/4"-19	36,0	17,0	12	9,0	5,0	19	1252820-08-04	
12	1/2"	3/4"-16	3/8"-19	35,7	17,0	12	9,0	9,0	19	1252820-08-06	
12	1/2"	3/4"-16	1/2"-14	39,7	17,0	14	9,5	9,5	22	1252820-08-08	
12	1/2"	3/4"-16	3/4"-14	43,2	17,0	16	9,5	17,0	27	1252820-08-12	
14, 15, 16	5/8"	7/8"-14	3/8"-19	38,7	19,5	12	12,0	9,0	24	1252820-10-06	
14, 15, 16	5/8"	7/8"-14	1/2"-14	42,0	19,5	14	12,0	12,0	24	1252820-10-08	
14, 15, 16	5/8"	7/8"-14	3/4"-14	44,2	19,5	16	12,0	18,0	27	1252820-10-12	
18, 20	3/4"	1 1/16"-12	1/2"-14	46,2	22,0	14	15,0	13,5	27	1252820-12-08	
18, 20	3/4"	1 1/16"-12	3/4"-14	48,3	22,0	16	15,0	15,0	27	1252820-12-12	
18, 20	3/4"	1 1/16"-12	1"-11	50,5	22,0	18	15,0	21,0	36	1252820-12-16	
25	1"	1 5/16"-12	1/2"-14	47,2	23,0	14	21,0	13,5	36	1252820-16-08	
25	1"	1 5/16"-12	3/4"-14	49,0	23,0	16	21,0	18,0	36	1252820-16-12	
25	1"	1 5/16"-12	1"-11	51,0	23,0	18	21,0	21,0	36	1252820-16-16	
25	1"	1 5/16"-12	1 1/4"-11			20			46	1252820-16-20	
25	1"	1 5/16"-12	1 1/2"-11	58,0	23,0	22	21,0	32,0	50	1252820-16-24	
28, 30, 32	1 1/4"	1 5/8"-12	1"-11	55,0	24,3	18	26,5	21,0	46	1252820-20-16	
28, 30, 32	1 1/4"	1 5/8"-12	1 1/4"-11	56,5	24,3	20	26,5	31,7	46	1252820-20-20	
28, 30, 32	1 1/4"	1 5/8"-12	1 1/2"-11	60,8	24,3	22	26,5	38,0	50	1252820-20-24	
35, 38	1 1/2"	1 7/8"-12	1 1/2"-11	64,0	27,5	22	32,0	32,0	50	1252820-24-24	
35, 38	1 1/2"	1 7/8"-12	1 1/4"-11	60,0	27,5	20	31,7	31,7	50	1252820-24-20	
50	2"	2 1/2"-12	2"-11	69,0	33,9	26	45,0	45,0	65	1252820-32-32	

JIC - 37° - ADAPTORS

BSP - male
with captive soft seal
JIC - female - swivel

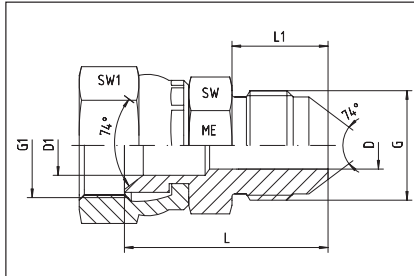


Tube O.D.		Thread		approx. dimensions						ME Order-Code
mm	in.	G1 = UNF/UN	G = BSP	L	L1	D	D1	SW1	SW	G1 x G
6	1/4"	7/16"-20	1/8"-28	25,0	8	4,5	4,5	17	14	2052511-04-02
6	1/4"	7/16"-20	1/4"-18	29,0	12	4,5	4,5	17	19	2052511-04-04
6	1/4"	7/16"-20	3/8"-18					17		2052511-04-06
8	5/16"	1/2"-20	1/8"-28	25,0	8	4,5	4,5	17	14	2052511-05-02
8	5/16"	1/2"-20	1/4"-18	29,5	12	5,0	5,0	17	19	2052511-05-04
8	5/16"	1/2"-20	3/8"-18	30,5	12	7,0	5,0	17	22	2052511-05-06
10	3/8"	9/16"-18	1/8"-28	26,0	8	4,5	4,5	19	14	2052511-06-02
10	3/8"	9/16"-18	1/4"-18	30,0	12	6,0	6,0	19	19	2052511-06-04
10	3/8"	9/16"-18	3/8"-18	30,0	12	7,0	7,0	19	22	2052511-06-06
10	3/8"	9/16"-18	1/2"-14	34,0	14	12,5	7,0	19	27	2052511-06-08
12	1/2"	3/4"-16	1/4"-18	31,0	12	6,0	9,0	24	19	2052511-08-04
12	1/2"	3/4"-16	3/8"-18	33,5	12	9,0	9,0	24	22	2052511-08-06
12	1/2"	3/4"-16	1/2"-14	36,0	14	10,0	10,0	24	27	2052511-08-08
12	1/2"	3/4"-16	3/4"-14	39,0	16	15,0	10,0	24	32	2052511-08-12
14, 15, 16	5/8"	7/8"-14	3/8"-18	34,0	12	9,0	12,5	27	22	2052511-10-06
14, 15, 16	5/8"	7/8"-14	1/2"-14	34,0	14	12,5	12,5	27	27	2052511-10-08
14, 15, 16	5/8"	7/8"-14	5/8"-14	37,5	16	14,5	12,0	27	30	2052511-10-10
14, 15, 16	5/8"	7/8"-14	3/4"-14	41,0	16	15,0	12,5	27	32	2052511-10-12
18, 20	3/4"	1 1/16"-12	3/8"-18					32		2052511-12-06
18, 20	3/4"	1 1/16"-12	1/2"-14	38,0	14	12,5	12,5	32	27	2052511-12-08
18, 20	3/4"	1 1/16"-12	3/4"-14	40,0	16	15,0	15,0	32	32	2052511-12-12
18, 20	3/4"	1 1/16"-12	1"-11	42,5	18	21,0	15,0	32	41	2052511-12-16
25	1"	1 5/16"-12	1/2"-14					41		2052511-16-08
25	1"	1 5/16"-12	3/4"-14	46,5	16	15,0	20,0	41	32	2052511-16-12
25	1"	1 5/16"-12	1"-11	45,0	18	20,0	20,0	41	41	2052511-16-16
25	1"	1 5/16"-12	1 1/4"-11					41		2052511-16-20
28, 30, 32	1 1/4"	1 5/8"-12	1"-11	50,0	18	22,0	22,0	50	41	2052511-20-16
28, 30, 32	1 1/4"	1 5/8"-12	1 1/4"-11	53,0	20	27,5	27,5	50	50	2052511-20-20
35, 38	1 1/2"	1 7/8"-12	1 1/4"-11	55,0	20	29,0	29,0	55	50	2052511-24-20
35, 38	1 1/2"	1 7/8"-12	1 1/2"-11	59,0	22	33,0	33,0	55	55	2052511-24-24

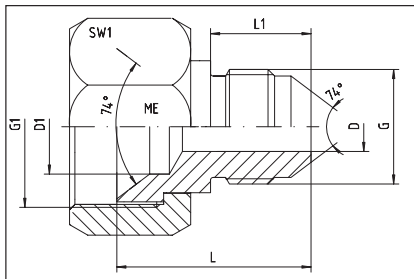
JIC - 37° - ADAPTORS

JIC - männlich
JIC - weiblich - drehbar

JIC - male
JIC - female - swivel



Form: A

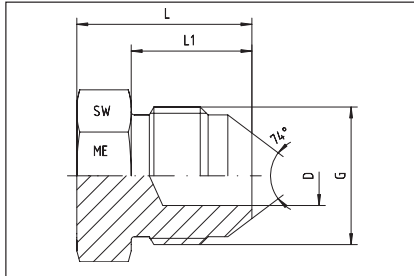


Form: B

Tube O.D.		Thread		approx. dimensions							Form	ME Order-Code G1 x G
mm	in.	G1 = UNF/UN	G = UNF/UN	L	L1	D1	D	SW1	SW			
6	1/4"	7/16"-20	7/16"-20	29,0	14,0	4,0	4,0	17	12	A	2252511-04-04	
6	1/4"	9/16"-18	7/16"-20	26,0	14,0	7,0	4,0	19		B	2252511-06-04	
6	1/4"	3/4"-16	7/16"-20	26,0	14,0	9,0	4,0	22		B	2252511-08-04	
6	1/4"	7/8"-14	7/16"-20	32,0	14,0	12,0	4,0	27		B	2252511-10-04	
8	5/16"	1/2"-20	1/2"-20	30,0	14,0	5,0	5,0	17	14	A	2252511-05-05	
10	3/8"	9/16"-18	9/16"-18	30,7	14,0	6,5	6,5	19	17	A	2252511-06-06	
10	3/8"	3/4"-16	9/16"-18	26,0	14,0	9,0	7,5	22		B	2252511-08-06	
10	3/8"	7/8"-14	9/16"-18	28,0	14,0	11,0	7,5	27		B	2252511-10-06	
12	1/2"	9/16"-18	3/4"-16	34,5	17,0	7,0	9,5	19	22	A	2252511-06-08	
12	1/2"	3/4"-16	3/4"-16	35,5	17,0	9,5	9,5	24	22	A	2252511-08-08	
12	1/2"	7/8"-14	3/4"-16	36,5	17,0	11,0	9,5	27	22	A	2252511-10-08	
12	1/2"	1 1/16"-12	3/4"-16	33,0	17,0	15,0	9,5	32		B	2252511-12-08	
14, 15, 16	5/8"	3/4"-16	7/8"-14	39,4	19,5	10,0	12,0	24	24	A	2252511-08-10	
14, 15, 16	5/8"	7/8"-14	7/8"-14	40,5	19,5	12,0	12,0	27	24	A	2252511-10-10	
14, 15, 16	5/8"	1 1/16"-12	7/8"-14	40,6	19,5	15,0	12,0	32	27	A	2252511-12-10	
14, 15, 16	5/8"	1 5/16"-12	7/8"-14					41			2252511-16-10	
18, 20	3/4"	7/8"-14	1 1/16"-12	45,5	22,0	12,0	15,0	27	28	A	2252511-10-12	
18, 20	3/4"	1 1/16"-12	1 1/16"-12	45,6	22,0	15,0	15,0	32	32	A	2252511-12-12	
18, 20	3/4"	1 5/16"-12	1 1/16"-12					41			2252511-16-12	
25	1"	1 5/16"-12	1 5/16"-12	48,7	23,0	21,0	21,0	41	36	A	2252511-16-16	
25	1"	1 5/8"-12	1 5/16"-12	56,9	23,0	26,0	21,0	50		B	2252511-20-16	
25	1"	1 7/8"-12	1 5/16"-12	42,0	23,0	30,0	21,0	60		B	2252511-24-16	
28, 30, 32	1 1/2"	1 5/16"-12	1 5/8"-12	53,0	24,3	19,0	26,5	50	46	A	2252511-16-20	
28, 30, 32	1 1/4"	1 5/8"-12	1 5/8"-12	56,0	24,3	27,5	27,5	50	46	A	2252511-20-20	
28, 30, 32	1 1/4"	1 7/8"-12	1 5/8"-12	62,0	24,3	32,0	26,5	55		B	2252511-24-20	
35, 38	1 1/2"	1 7/8"-12	1 7/8"-12	60,0	27,5	33,0	33,0	55	50	A	2252511-24-24	
35, 38	1 1/2"	2 1/2"-12	1 7/8"-12	66,5	27,5	44,0	32,0	70	65	A	2252511-32-24	

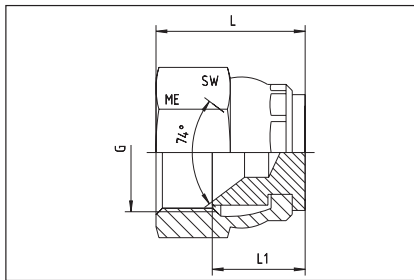
JIC - 37° - ADAPTORS

Coned plug
male



Tube O.D.		Thread G	approx. dimensions				ME Order-Code
mm	in.		L	L1	D	SW	
6	1/4"	7/16"-20 UNF	20,5	14,0	4,0	12	5250010-04
8	5/16"	1/2"-20 UNF	20,5	14,0	5,0	14	5250010-05
10	3/8"	9/16"-18 UNF	22,0	14,0	7,0	17	5250010-06
12	1/2"	3/4"-16 UNF	24,0	17,0	9,5	22	5250010-08
14, 15, 16	5/8"	7/8"-14 UNF	28,0	19,5	12,0	24	5250010-10
18, 20	3/4"	1 1/16"-12 UN	33,0	22,0	15,0	27	5250010-12
25	1"	1 5/16"-12 UN	34,0	23,0	21,5	36	5250010-16
28, 30, 32	1 1/4"	1 5/8"-12 UN	37,7	24,3	27,5	46	5250010-20
35, 38	1 1/2"	1 7/8"-12 UN	42,5	27,5	33,0	50	5250010-24
50	2"	2 1/2"-12 UN	52,0	33,9	45,0	65	5250010-32

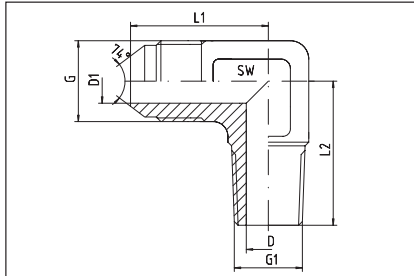
Swivel cap - female



Tube O.D.		Thread G	approx. dimensions			ME Order-Code
mm	in.		L	L1	SW	
6	1/4"	7/16"-20 UNF	20,0	12	17	5250011-04
8	5/16"	1/2"-20 UNF	22,0	12	17	5250011-05
10	3/8"	9/16"-18 UNF	23,0	13	19	5250011-06
12	1/2"	3/4"-16 UNF	25,5	14	24	5250011-08
14, 15, 16	5/8"	7/8"-14 UNF	30,0	18	27	5250011-10
18, 20	3/4"	1 1/16"-12 UN	33,0	18	32	5250011-12
25	1"	1 5/16"-12 UN	36,0	21	41	5250011-16
28, 30, 32	1 1/4"	1 5/8"-12 UN	39,5	22	50	5250011-20
35, 38	1 1/2"	1 7/8"-12 UN	44,0	24	55	5250011-24
50	2"	2 1/2"-12 UN			70	5250011-32

JIC - 37° - ELBOW-ADAPTORS

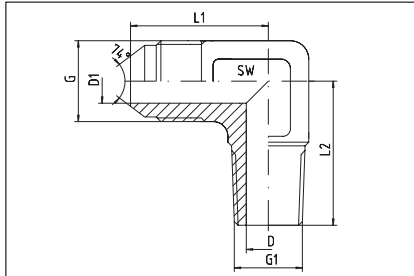
Male-90°-elbow
 JIC - male
 NPT - male



Tube O.D.		Thread		approx. dimensions					ME Order-Code
mm	in.	G = UNF/UN	G1 = NPT	L1	L2	D	D1	SW	G x G1
6	1/4"	7/16"-20	1/8"-27						1252517-04-02
6	1/4"	7/16"-20	1/4"-18	28,5	26,5	4,5	4,5		1252517-04-04
6	1/4"	7/16"-20	3/8"-18						1252517-04-06
8	5/16"	1/2"-20	1/8"-27						1252517-05-02
8	5/16"	1/2"-20	1/4"-18						1252517-05-04
8	5/16"	1/2"-20	3/8"-18						1252517-05-06
10	3/8"	9/16"-18	1/8"-27	27,0	25,0	4,0	7,5	14	1252517-06-02
10	3/8"	9/16"-18	1/4"-18	27,0	25,0	7,5	7,5	14	1252517-06-04
10	3/8"	9/16"-18	3/8"-18	27,0	27,0	8,5	7,5	14	1252517-06-06
10	3/8"	9/16"-18	1/2"-14						1252517-06-08
12	1/2"	3/4"-16	1/4"-18	31,0	29,5		10,0	19	1252517-08-04
12	1/2"	3/4"-16	3/8"-18	31,0	29,5	10,0	10,0	19	1252517-08-06
12	1/2"	3/4"-16	1/2"-14	31,0	34,0	10,0	10,0	19	1252517-08-08
14, 15, 16	5/8"	7/8"-14	3/8"-18	37,5	37,0	10,0	12,5	24	1252517-10-06
14, 15, 16	5/8"	7/8"-14	1/2"-14	37,5	38,0	14,0	12,5	24	1252517-10-08
14, 15, 16	5/8"	7/8"-14	3/4"-14	37,5	41,5	15,5	12,5	24	1252517-10-12
18, 20	3/4"	1 1/16"-12	1/2"-14	42,0	38,0	14,0	15,5	24	1252517-12-08
18, 20	3/4"	1 1/16"-12	3/4"-14	42,0	41,5	15,5	15,5	24	1252517-12-12
18, 20	3/4"	1 1/16"-12	1"-11,5					24	1252517-12-16
25	1"	1 5/16"-12	1/2"-14					33	1252517-16-08
25	1"	1 5/16"-12	3/4"-14					33	1252517-16-12
25	1"	1 5/16"-12	1"-11,5	49,0	50,0	21,0		33	1252517-16-16
28, 30, 32	1 1/4"	1 5/8"-12	1"-11,5						1252517-20-16
28, 30, 32	1 1/4"	1 5/8"-12	1 1/4"-11,5						1252517-20-20
35, 38	1 1/2"	1 7/8"-12	1 1/4"-11,5						1252517-24-20
35, 38	1 1/2"	1 7/8"-12	1 1/2"-11,5						1252517-24-24

JIC - 37° - ELBOW-ADAPTORS

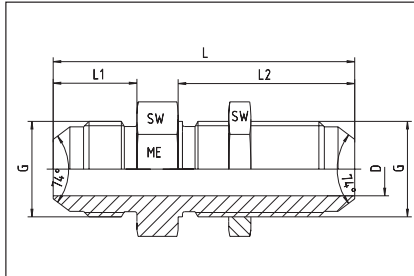
Male-90°-elbow
 JIC - male
 BSP - taper - male



Tube O.D.		Thread		approx. dimensions					ME Order-Code
mm	in.	G = UNF/UN	G1 = keg.	L1	L2	D	D1	SW	G x G1
6	1/4"	7/16"-20	1/8"-28						1252520-04-02
6	1/4"	7/16"-20	1/4"-19						1252520-04-04
6	1/4"	7/16"-20	3/8"-19						1252520-04-06
8	5/16"	1/2"-20	1/8"-28						1252520-05-02
8	5/16"	1/2"-20	1/4"-19						1252520-05-04
8	5/16"	1/2"-20	3/8"-19						1252520-05-06
10	3/8"	9/16"-18	1/8"-28						1252520-06-02
10	3/8"	9/16"-18	1/4"-19						1252520-06-04
10	3/8"	9/16"-18	3/8"-19						1252520-06-06
10	3/8"	9/16"-18	1/2"-14						1252520-06-08
12	1/2"	3/4"-16	1/4"-19						1252520-08-04
12	1/2"	3/4"-16	3/8"-19						1252520-08-06
12	1/2"	3/4"-16	1/2"-14						1252520-08-08
14, 15, 16	5/8"	7/8"-14	3/8"-19						1252520-10-06
14, 15, 16	5/8"	7/8"-14	1/2"-14						1252520-10-08
14, 15, 16	5/8"	7/8"-14	3/4"-14						1252520-10-12
18, 20	3/4"	1 1/16"-12	1/2"-14						1252520-12-08
18, 20	3/4"	1 1/16"-12	3/4"-14						1252520-12-12
18, 20	3/4"	1 1/16"-12	1"-11						1252520-12-16
25	1"	1 5/16"-12	1/2"-14						1252520-16-08
25	1"	1 5/16"-12	3/4"-14						1252520-16-12
25	1"	1 5/16"-12	1"-11						1252520-16-16
28, 30, 32	1 1/4"	1 5/8"-12	1"-11						1252520-20-16
28, 30, 32	1 1/4"	1 5/8"-12	1 1/4"-11						1252520-20-20
35, 38	1 1/2"	1 7/8"-12	1 1/4"-11						1252520-24-20
35, 38	1 1/2"	1 7/8"-12	1 1/2"-11						1252520-24-24

JIC - 37° - CONNECTIONS

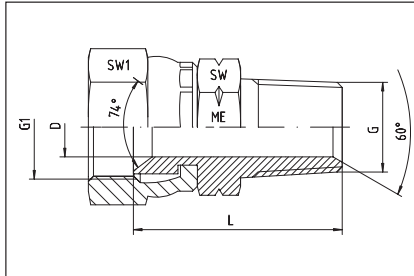
Straight bulkhead connections



Tube O.D.		Thread G	approx. dimensions					ME Order-Code
mm	in.		L	L1	L2	D	SW	
6	1/4"	7/16"-20 UNF	52,5	14,0	31,5	4,0	17	1252513-04-04
8	5/16"	1/2"-20 UNF	52,5	14,0	31,5	6,0	19	1252513-05-05
10	3/8"	9/16"-18 UNF	55,5	14,0	33,0	7,5	22	1252513-06-06
12	1/2"	3/4"-16 UNF	62,0	16,5	37,0	10,0	24	1252513-08-08
14, 15, 16	5/8"	7/8"-14 UNF	69,5	19,0	40,5	12,0	30	1252513-10-10
18, 20	3/4"	1 1/16"-12 UN	78,5	21,5	45,0	15,5	36	1252513-12-12
25	1"	1 5/16"-12 UN	80,0	23,1	44,4	21,5	41	1252513-16-16
28, 30, 32	1 1/4"	1 5/8"-12 UN	84,0	24,3	45,7	27,5	50	1252513-20-20
35, 38	1 1/2"	1 7/8"-12 UN	89,5	27,5	46,0	33,0	55	1252513-24-24
50	2"	2 1/2"-12 UN	106,5	33,9	53,0	45,0	70	1252513-32-32

JIC - 37° - STRAIGHT ADAPTORS

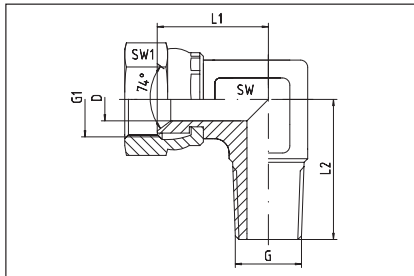
JIC - female - swivel
NPT - male



Tube O.D.		Thread		approx. dimensions				ME Order-Code G1 x G
mm	in.	G1 = UNF/UN	G = NPT	L	D	SW1	SW	
6	1/4"	7/16"-20	1/8"-27	24,0	4,0	17	12	1252518-04-02
6	1/4"	7/16"-20	1/4"-18	30,0	4,0	17	17	1252518-04-04
6	1/4"	7/16"-20	3/8"-18			17		1252518-04-06
8	5/16"	1/2"-20	1/8"-27	24,0	4,0	17	12	1252518-05-02
8	5/16"	1/2"-20	1/4"-18	30,0	4,0	17	14	1252518-05-04
8	5/16"	1/2"-20	3/8"-18	31,0	4,0	17	19	1252518-05-06
10	3/8"	9/16"-18	1/8"-27	24,5	4,0	19	14	1252518-06-02
10	3/8"	9/16"-18	1/4"-18	30,0	6,0	19	17	1252518-06-04
10	3/8"	9/16"-18	3/8"-18	31,5	7,0	19	19	1252518-06-06
10	3/8"	9/16"-18	1/2"-14	36,0	7,0	19	22	1252518-06-08
12	1/2"	3/4"-16	1/4"-18	32,0	6,0	24	17	1252518-08-04
12	1/2"	3/4"-16	3/8"-18	32,5	9,0	24	19	1252518-08-06
12	1/2"	3/4"-16	1/2"-14	39,0	9,0	24	22	1252518-08-08
12	1/2"	3/4"-16	3/4"-14	40,0	10,0	24	27	1252518-08-12
14, 15, 16	5/8"	7/8"-14	3/8"-18	35,0	9,0	27	22	1252518-10-06
14, 15, 16	5/8"	7/8"-14	1/2"-14	40,0	12,0	27	22	1252518-10-08
14, 15, 16	5/8"	7/8"-14	3/4"-14	41,0	12,5	27	27	1252518-10-12
18, 20	3/4"	1 1/16"-12	1/2"-14	41,0	13,5	32	27	1252518-12-08
18, 20	3/4"	1 1/16"-12	3/4"-14	41,0	15,0	32	27	1252518-12-12
18, 20	3/4"	1 1/16"-12	1"-11,5	46,0	15,0	32	36	1252518-12-16
25	1"	1 5/16"-12	1/2"-14					1252518-16-08
25	1"	1 5/16"-12	3/4"-14	45,0	18,0	41	32	1252518-16-12
25	1"	1 5/16"-12	1"-11,5	48,0	21,0	41	36	1252518-16-16
25	1"	1 5/16"-12	1 1/4"-11,5			41		1252518-16-20
28, 30, 32	1 1/4"	1 5/8"-12	1"-11,5			50		1252518-20-16
28, 30, 32	1 1/4"	1 5/8"-12	1 1/4"-11,5	52,0	27,5	50	46	1252518-20-20
28, 30, 32	1 1/4"	1 5/8"-12	1 1/2"-11,5			50		1252518-20-24
35, 38	1 1/2"	1 7/8"-12	1 1/4"-11,5	54,0	32,0	55	46	1252518-24-20
35, 38	1 1/2"	1 7/8"-12	1 1/2"-11,5	54,5	33,0	55	50	1252518-24-24

JIC - 37° - ELBOW-ADAPTORS

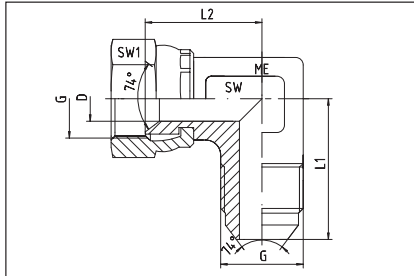
90°-swivel-male-elbow
 JIC - female - swivel
 NPT - male



Tube O.D.		Thread		approx. dimensions					ME Order-Code
mm	in.	G1 = UNF/UN	G = NPT	L1	L2	D	SW	SW1	G1 x G
6	1/4"	7/16"-20	1/8"-27					17	1252519-04-02
6	1/4"	7/16"-20	1/4"-18					17	1252519-04-04
6	1/4"	7/16"-20	3/8"-18					17	1252519-04-06
8	5/16"	1/2"-20	1/8"-27					17	1252519-05-02
8	5/16"	1/2"-20	1/4"-18					17	1252519-05-04
8	5/16"	1/2"-20	3/8"-18					17	1252519-05-06
10	3/8"	9/16"-18	1/4"-18	22,3	25,0	7,5	14	19	1252519-06-04
10	3/8"	9/16"-18	3/8"-18	22,3	27,0	7,5	14	19	1252519-06-06
10	3/8"	9/16"-18	1/2"-14					19	1252519-06-08
12	1/2"	3/4"-16	1/4"-18	24,5	29,5	10,0	19	24	1252519-08-04
12	1/2"	3/4"-16	3/8"-18	24,5	29,5	10,0	19	24	1252519-08-06
12	1/2"	3/4"-16	1/2"-14	24,5	34,0	10,0		24	1252519-08-08
12	1/2"	3/4"-16	3/4"-14					24	1252519-08-12
14, 15, 16	5/8"	7/8"-14	3/8"-18	29,5	37,0	12,0	24	27	1252519-10-06
14, 15, 16	5/8"	7/8"-14	1/2"-14	29,5	38,0	12,0	24	27	1252519-10-08
14, 15, 16	5/8"	7/8"-14	3/4"-14	29,5	41,5	12,0	24	27	1252519-10-12
18, 20	3/4"	1 1/16"-12	1/2"-14	31,0	38,0	15,5	24	32	1252519-12-08
18, 20	3/4"	1 1/16"-12	3/4"-14	31,0	41,5	15,5	24	32	1252519-12-12
18, 20	3/4"	1 1/16"-12	1"-11,5					32	1252519-12-16
25	1"	1 5/16"-12	3/4"-14				33	41	1252519-16-12
25	1"	1 5/16"-12	1"-11,5				33	41	1252519-16-16
25	1"	1 5/16"-12	1 1/4"-11,5					41	1252519-16-20
28, 30, 32	1 1/4"	1 5/8"-12	1"-11,5					50	1252519-20-16
28, 30, 32	1 1/4"	1 5/8"-12	1 1/4"-11,5					50	1252519-20-20
28, 30, 32	1 1/4"	1 5/8"-12	1 1/2"-11,5					50	1252519-20-24
35, 38	1 1/2"	1 7/8"-12	1 1/4"-11,5					55	1252519-24-20
35, 38	1 1/2"	1 7/8"-12	1 1/2"-11,5					55	1252519-24-24

JIC - 37° - ELBOW-ADAPTORS

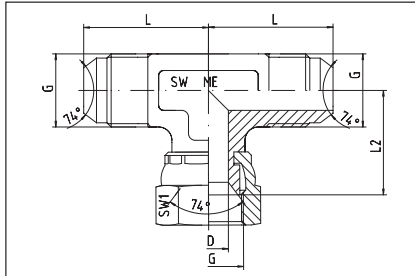
Swivel-elbow-adaptors
DKJ - AGJ



Tube O.D.		Thread G = UNF/UN	approx. dimensions					ME Order-Code
mm	in.		L1	L2	D	SW	SW1	
6	1/4"	7/16"-20	22,5	16,7	4,0	12	14	1252514-04-04
8	5/16"	1/2"-20	24,0	17,5	5,5	13	17	1252514-05-05
10	3/8"	9/16"-18	27,0	22,5	7,5	14	19	1252514-06-06
12	1/2"	3/4"-16	32,0	24,5	10,0	19	24	1252514-08-08
14, 15, 16	5/8"	7/8"-14	37,5	29,5	12,0	24	27	1252514-10-10
18, 20	3/4"	1 1/16"-12	42,0	31,0	15,5	24	32	1252514-12-12
25	1"	1 5/16"-12	46,0	35,7	21,5	33	41	1252514-16-16
28, 30, 32	1 1/4"	1 5/8"-12	52,5	42,8	27,5	41	50	1252514-20-20
35, 38	1 1/2"	1 7/8"-12	59,0	47,2	33,0	48	60	1252514-24-24

JIC - 37° - TEE-ADAPTORS

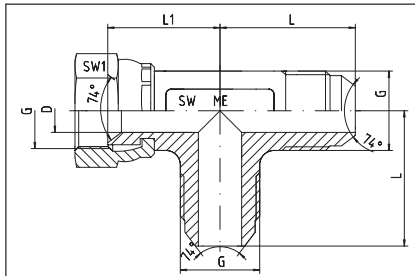
Swivel-branch tee
AGJ - DKJ - AGJ



Tube O.D.		Thread G	approx. dimensions					ME Order-Code
mm	in.		L	L2	D	SW	SW1	
6	1/4"	7/16"-20 UNF	22,5	16,7	4,0	12	14	1252515-04-04-04
8	5/16"	1/2"-20 UNF	24,0	17,5	5,5	13	17	1252515-05-05-05
10	3/8"	9/16"-18 UNF	27,0	22,3	7,5	14	19	1252515-06-06-06
12	1/2"	3/4"-16 UNF	31,0	24,5	10,0	19	24	1252515-08-08-08
14, 15, 16	5/8"	7/8"-14 UNF	37,5	29,5	12,0	24	27	1252515-10-10-10
18, 20	3/4"	1 1/16"-12 UN	42,0	31,0	15,5	24	32	1252515-12-12-12
25	1"	1 5/16"-12 UN	46,0	35,7	21,5	33	41	1252515-16-16-16
28, 30, 32	1 1/4"	1 5/8"-12 UN	52,5	42,8	27,5	41	50	1252515-20-20-20
35, 38	1 1/2"	1 7/8"-12 UN	59,0	47,2	33,0	48	60	1252515-24-24-24

JIC - 37° - TEE-ADAPTORS

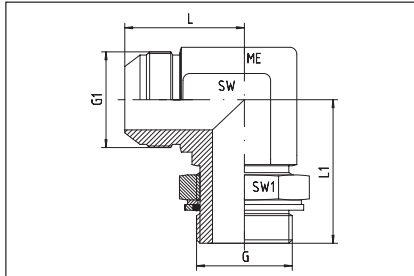
Swivel-run tee
DKJ - AGJ - AGJ



Tube O.D.		Thread G	approx. dimensions					ME Order-Code
mm	in.		L	L1	D	SW	SW1	
6	1/4"	7/16"-20 UNF	22,5	16,7	4,0	12	14	1252516-04-04-04
8	5/16"	1/2"-20 UNF	24,0	17,5	5,5	13	17	1252516-05-05-05
10	3/8"	9/16"-18 UNF	27,0	22,3	7,5	14	19	1252516-06-06-06
12	1/2"	3/4"-16 UNF	31,0	24,5	10,0	19	24	1252516-08-08-08
14, 15, 16	5/8"	7/8"-14 UNF	37,5	29,5	12,0	24	27	1252516-10-10-10
18, 20	3/4"	1 1/16"-12 UN	42,0	31,0	15,5	24	32	1252516-12-12-12
25	1"	1 5/16"-12 UN	46,0	35,7	21,5	33	41	1252516-16-16-16
28, 30, 32	1 1/4"	1 5/8"-12 UN	52,5	42,8	27,5	41	50	1252516-20-20-20
35, 38	1 1/2"	1 7/8"-12 UN	59,9	47,2	33,0	48	60	1252516-24-24-24

MALE STUD ELBOWS

adjustable
Thread: BSP - parallel
Sealing by captive O-ring and washer



Tube O.D.		Thread		approx. dimensions				ME Order-Code
mm	in.	G1 = UNF/UN	G = BSP	L	L1	SW	SW1	G1 x G
6	1/4"	7/16"-20	1/8"	22,6	26,5	11	14	1252530-04-02
6	1/4"	7/16"-20	1/4"	22,6	32,0	14	19	1252530-04-04
8	5/16"	1/2"-20	1/4"	26,6	32,0	14	19	1252530-05-04
10	3/8"	9/16"-18	1/4"	26,9	32,0	14	19	1252530-06-04
10	3/8"	9/16"-18	3/8"	29,0	37,0	19	22	1252530-06-06
10	3/8"	9/16"-18	1/2"	31,0	43,0	22	27	1252530-06-08
12	1/2"	3/4"-16	3/8"	31,8	37,0	19	22	1252530-08-06
12	1/2"	3/4"-16	1/2"	33,8	43,0	22	27	1252530-08-08
14, 15, 16	5/8"	7/8"-14	1/2"	36,8	43,0	22	27	1252530-10-08
18, 20	3/4"	1 1/16"-12	1/2"	42,2	49,5	27	27	1252530-12-08
18, 20	3/4"	1 1/16"-12	3/4"	42,2	49,5	27	36	1252530-12-12
25	1"	1 5/16"-12	1"	46,0	52,0	33	41	1252530-16-16
28, 30, 32	1 1/4"	1 5/8"-12	1 1/4"	52,3	57,0	41	50	1252530-20-20
35, 38	1 1/2"	1 7/8"-12	1 1/2"	59,2	60,5		55	1252530-24-24

Email: sales@mehydro.com

M E HYDRAULICS PVT LTD

www.mehydro.com

MANISHA ENTERPRISE - www.mehydro.com
FLARE COUPLING PARTS FOR COUPLING BODIES WITH 24°-CONE - W DIN 3861

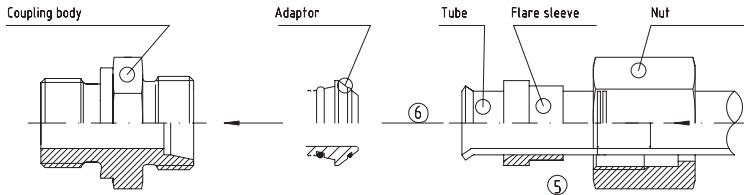
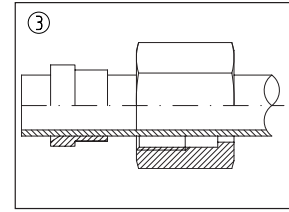
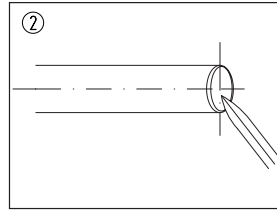
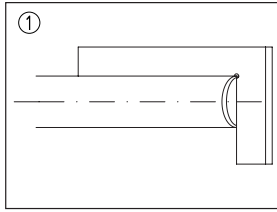
ASSEMBLY INSTRUCTIONS	7.3
TUBE CONNECTING PARTS - TECHNICAL DATA	7.4
TUBE CONNECTING PARTS - ORDER-CODE	7.5

Email: sales@mehydro.com

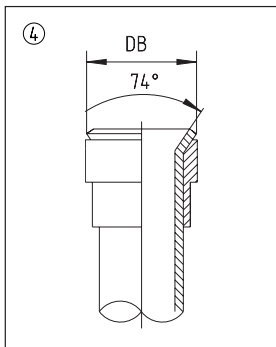
M E HYDRAULICS PVT LTD

www.mehydro.com

ASSEMBLY INSTRUCTIONS



1. Cut the tube square (do not use a pipe cutter).
2. Deburr the pipe inside and outside, do not chamfer. Clean the tube end, otherwise the sealing surface of the tube will be damaged when it is flared.
3. Slide the nut and the collar over the tube as shown in the illustration.



	Tube O.D.	6	8	10	12	14	15	16	18
DB min.		9,1	11,3	13,1	15,3	18,6	19,1	20,6	23,2
DB max.		10,0	12,0	14,0	16,0	19,6	20,0	22,0	24,0
	Tube O.D.	20	22	25	28	30	35	38	42
DB min.		25,6	26,5	31,1	32,7	37,0	41,8	46,0	48,8
DB max.		26,8	27,5	33,0	33,3	38,7	42,7	47,2	49,8

4. Flare the tube by means of flaring tools or a flaring machine. The flare diameter DB must not be out of the limits given in the table. The flare cone must be square to the tubular axle and concentric to the collar. The inner cone must be clean and free of flutes.

5. Press the adaptor into the coupling body and press flared tube onto the adaptor. Screw the nut on by hand.

Tighten the nut with a spanner until the adaptor is pressed captively into the coupling body.

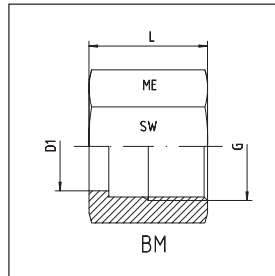
When torque must be intensified, tighten the nut approx. 1/4 turn more.

Each time the connection is detached, it must be retightened without any intensified torque.

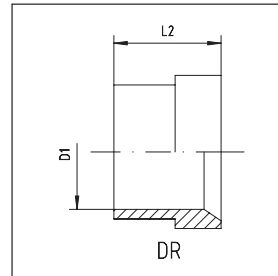
TUBE CONNECTING PARTS TECHNICAL DATA

For flare couplings 37° and coupling bodies with 24°-cone

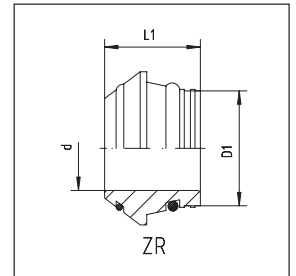
Type of port end W DIN 3861



Nut



Flare sleeve



O-ring adaptor
O-ring - NBR
Viton - on request

Series	Pressure PN	Tube O.D. D1 + Tol.	Thread G	SW	L
L	400	6	M 12 x 1,5	14	17,0
L	400	8	M 14 x 1,5	17	18,0
L	400	10	M 16 x 1,5	19	19,5
L	400	12	M 18 x 1,5	22	20,5
L	400	15	M 22 x 1,5	27	23,0
L	315	18	M 26 x 1,5	32	23,0
L	315	22	M 30 x 2	36	27,5
L	250	28	M 36 x 2	41	27,5
L	250	35	M 45 x 2	50	30,0
L	250	42	M 52 x 2	60	34,0
S	630	6	M 14 x 1,5	17	18,0
S	630	8	M 16 x 1,5	19	20,0
S	630	10	M 18 x 1,5	22	20,5
S	630	12	M 20 x 1,5	24	21,0
S	630	14	M 22 x 1,5	27	23,0
S	400	16	M 24 x 1,5	30	26,5
S	400	20	M 30 x 2	36	27,5
S	400	25	M 36 x 2	46	30,5
S	400	30	M 42 x 2	50	32,0
S	315 (1)	38	M 52 x 2	60	38,0

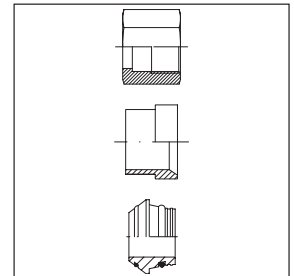
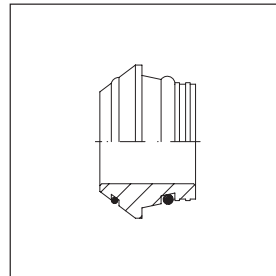
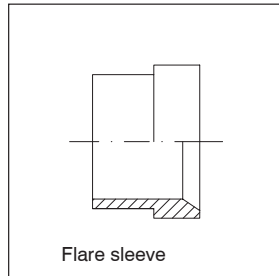
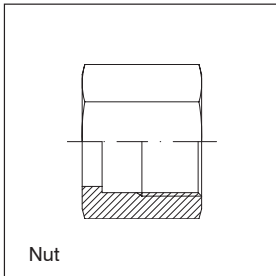
D1 + Tol.	L2
6	10,5
8	11,0
10	12,5
12	13,0
15	14,0
18	14,5
22	18,0
28	17,0
35	19,0
42	21,0
6	10,5
8	11,0
10	12,5
12	13,0
14	14,5
16	17,0
20	17,5
25	20,0
30	21,5
38	26,5

D1	d	L1
6	3	11,5
8	5	12,0
10	6	12,5
12	8	12,5
15	11	12,5
18	14	13,0
22	17	14,2
28	23	14,7
35	28	18,5
42	35	20,5
6	3	11,5
8	5	12,0
10	6	12,5
12	8	12,5
14	9	14,0
16	11	15,0
20	14	18,5
25	19	20,0
30	23	22,0
38	30	26,0

(1) In the 315 bar section, the normal safety factor of 4:1 is reduced to 3:1.

TUBE CONNECTING PARTS

For flare couplings 37°



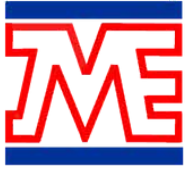
O-ring adaptor
O-ring - NBR
Viton - on request

ME Order-Code
Nut
BM-06-L
BM-08-L
BM-10-L
BM-12-L
BM-15-L
BM-18-L
BM-22-L
BM-28-L
BM-35-L
BM-42-L
BM-06-S
BM-08-S
BM-10-S
BM-12-S
BM-14-S
BM-16-S
BM-20-S
BM-25-S
BM-30-S
BM-38-S

ME Order-Code
Flare sleeve
DR-06-L
DR-08-L
DR-10-L
DR-12-L
DR-15-L
DR-18-L
DR-22-L
DR-28-L
DR-35-L
DR-42-L
DR-06-S
DR-08-S
DR-10-S
DR-12-S
DR-14-S
DR-16-S
DR-20-S
DR-25-S
DR-30-S
DR-38-S

ME Order-Code
O-ring adaptor
ZR-06-L
ZR-08-L
ZR-10-L
ZR-12-L
ZR-15-L
ZR-18-L
ZR-22-L
ZR-28-L
ZR-35-L
ZR-42-L
ZR-06-S
ZR-08-S
ZR-10-S
ZR-12-S
ZR-14-S
ZR-16-S
ZR-20-S
ZR-25-S
ZR-30-S
ZR-38-S

ME Order-Code
Complete parts
BAN-06-L
BAN-08-L
BAN-10-L
BAN-12-L
BAN-15-L
BAN-18-L
BAN-22-L
BAN-28-L
BAN-35-L
BAN-42-L
BAN-06-S
BAN-08-S
BAN-10-S
BAN-12-S
BAN-14-S
BAN-16-S
BAN-20-S
BAN-25-S
BAN-30-S
BAN-38-S



M E HYDRAULICS PRIVATE LIMITED

adding value to customers



Exports to:

- USA
- UK
- UAE
- SWEDEN
- SINGAPORE
- KUWAIT
- ITALY
- GERMANY
- CHILE



M E HYDRAULICS PVT LTD

UNIT 4, MERCHANT IND ESTATE 1
VALIV ROAD, VASAI EAST
MUMBAI - 401208 - INDIA
Email:- info@mehydro.com

Tel: +91-9320160600
Web: www.mehydro.com

ISO 9001:2015 Certified Company

www.mehydro.com