

ME HYDRAULICS PRIVATE LIMITED

adding value to customers

Tube Connectors - Tube Clamps - Valves



ISO 9001:2015 Certified Company

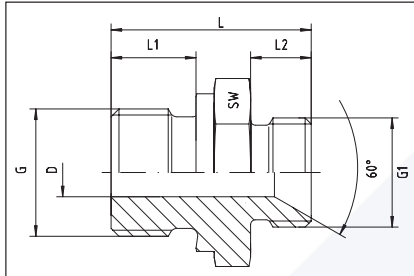
www.mehydro.com

ADAPTORS - BSP - METRIC - NPT - BSP - TAPER

STRAIGHT ADAPTORS - BSP - METRIC	5.3
STRAIGHT WELDING ADAPTORS - METRIC - 60°-CONE	5.4
STRAIGHT ADAPTORS - BSP - PARALLEL - BSP - TAPER	5.5
STRAIGHT ADAPTORS - BSP - PARALLEL	5.6
STRAIGHT ADAPTORS - BSP - PARALLEL - REDUCER	5.7
STRAIGHT ADAPTORS - BSP - PARALLEL - NPT	5.8
STRAIGHT ADAPTORS - NPT - NPT	5.9
STRAIGHT ADAPTORS - BSP - TAPER - BSP - TAPER	5.10
STRAIGHT ADAPTORS - BSP - FEMALE - BSP - TAPER	5.11
BSPT-TAPER-PLUG - BSP - TAPER	5.11
STRAIGHT ADAPTORS - BSP - FEMALE - NPT - MALE	5.12
NPT-PLUG	5.12
STRAIGHT ADAPTORS - BSP - FEMALE - BSP - PARALLEL	5.13
STRAIGHT ADAPTORS - DKR - BSP - FEMALE	5.14
ELBOW-ADAPTORS - DKR - BSP - FEMALE	5.14
T-ADAPTORS - DKR - BSP - FEMALE	5.15
K-ADAPTORS - DKR - BSP - FEMALE	5.15
ELBOW-ADAPTORS - BSP - MALE	5.16
T-ADAPTORS - BSP - MALE	5.16
CROSS-ADAPTORS - BSP - MALE	5.17
WE-BLOCK-ELBOW-ADAPTORS - BSP - FEMALE - BSP - MALE	5.17
LE-ADAPTORS - BSP - FEMALE - BSP - MALE	5.18
TE-ADAPTORS - BSP - FEMALE - BSP - MALE	5.18
ELBOW-ADAPTORS - BSP - PARALLEL	5.19
T-ADAPTORS - BSP - PARALLEL	5.19
STRAIGHT BULKHEAD ADAPTORS - BSP - MALE	5.20
ELBOW-ADAPTORS - BSP - MALE - BSP - TAPER - MALE	5.20
HEXAGON SOCKETS - BSP - FEMALE	5.21
HEXAGON SOCKETS - NPT - FEMALE	5.22
BSP-FEMALE-SWIVEL CAPS	5.23
BSP-60°-CONED PLUG - PARALLEL	5.23
HEXAGON-ADAPTORS - BSP - MALE / FEMALE	5.24
MALE/FEMALE STUD ADAPTORS - BSP - MALE - NPT - FEMALE	5.25
MALE/FEMALE STUD ADAPTORS - NPT - MALE - BSP - FEMALE	5.26
MALE/FEMALE STUD ADAPTORS - NPT - MALE - NPT - FEMALE	5.27
HEXAGON CAPS - BSP - PARALLEL	5.28
HEXAGON CAPS - NPT	5.28

STRAIGHT ADAPTORS

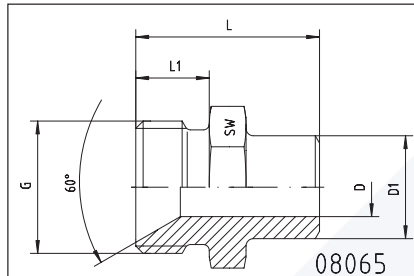
BSP with sealing shoulder form B
metric
with 60°-cone



Thread		approx. dimensions					SW	ME Order-Code
G = BSP	G1	L	L1	L2	D			
1/2"	M 18 x 1,5	34	14	11	10	27	0226820-08-06	
1/2"	M 22 x 1,5	35	14	12	11	27	0226820-08	
1/2"	M 26 x 1,5	38	14	12	14	27	0226820-08-10	
3/4"	M 26 x 1,5	38	16	12	15	32	0226820-12-10	
3/4"	M 30 x 1,5	39	16	14	20	32	0226820-12	
1"	M 30 x 1,5	41	18	14	20	41	0226821-16-12	
1"	M 38 x 1,5	41	18	14	24	41	0226825-16	
1 1/4"	M 38 x 1,5	44	20	14	25	50	0226826-20-16	
1 1/4"	M 45 x 1,5	46	20	16	32	50	0226832-20	
1 1/2"	M 45 x 1,5	49	22	16	32	55	0226833-24-20	
1 1/2"	M 52 x 1,5	49	22	16	39	55	0226840-24	
2"	M 65 x 2	54	24	17	45	70	0226850-32	
2 1/2"	M 78 x 2	57	26	17	56	85	0226860-40	
3"	M 100 x 2	68	28	22	76	105	0226880-48	

STRAIGHT WELDING ADAPTORS

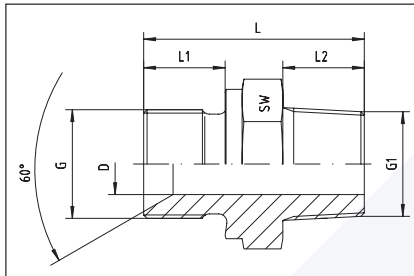
metric - pitch 1,5 mm and 2 mm
with 60°-cone



Thread G	approx. dimensions					ME Order-Code
	L	L1	D	D1	SW	
M 12 x 1,5	24	10	3,5	6	12	0806504-02
M 14 x 1,5	25	10	4,5	8	14	0806507-04
M 16 x 1,5	25	10	6,0	10	17	0806509-05
M 18 x 1,5	25	10	8,0	14	19	0806511-06
M 22 x 1,5	27	12	10,5	17	22	0806514-08
M 26 x 1,5	28	12	13,0	21	27	0806517-10
M 30 x 1,5	28	12	15,5	25	30	0806521-12
M 38 x 1,5	30	14	21,0	30	41	0806526-16
M 45 x 1,5	31	14	28,0	38	46	0806533-20
M 52 x 1,5	32	14	35,0	44	55	0806541-24
M 65 x 2	36	17	45,0	57	65	0806551-32
M 78 x 2	36	17	55,0	64	80	0806561-40
M 90 x 2	47	22	67,0	76	90	0806571-48
M 100 x 2	47	22	77,0	89	100	0806581-56

STRAIGHT ADAPTORS

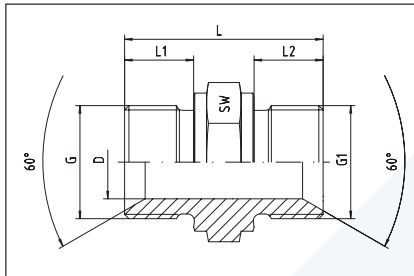
BSP - male
with 60°-cone
BSP - taper - male



Thread		approx. dimensions					SW	ME Order-Code
G = BSP	G1 = BSPT	L	L1	L2	D			
1/8"-28	1/8"-28	23,0	8	8	4,0	14	1050710-02-02	
1/4"-19	1/4"-19	30,0	10	12	6,0	19	1050710-04-04	
3/8"-19	3/8"-19	32,5	12	12	9,0	22	1050710-06-06	
1/2"-14	1/2"-14	43,0	14	19	12,5	27	1050710-08-08	
3/4"-14	3/4"-14	47,0	16	19	17,5	32	1050710-12-12	
1"-11	1"-11	49,0	18	18	22,0	41	1050710-16-16	
1 1/4"-11	1 1/4"-11	54,5	20	20	29,0	50	1050710-20-20	
1 1/2"-11	1 1/2"-11	58,5	22	22	37,0	55	1050710-24-24	
2"-11	2"-11	63,0	22	26	45,0	70	1050710-32-32	
1/4"-19	1/8"-28	26,0	10	8	4,0	19	1050710-04-02	
1/4"-19	3/8"-19	32,0	10	12	7,0	19	1050710-04-06	
1/4"-19	1/2"-14	40,0	10	19	6,0	22	1050710-04-08	
3/8"-19	1/2"-14	42,0	12	19	9,0	22	1050710-06-08	
1/2"-14	3/8"-19	37,0	14	12	9,0	27	1050710-08-06	
1/2"-14	3/4"-14	45,0	14	19	12,5	27	1050710-08-12	
3/4"-14	1/2"-14	45,0	16	19	12,5	32	1050710-12-08	

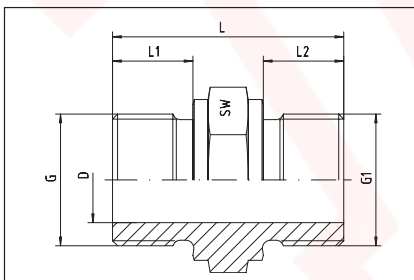
STRAIGHT ADAPTORS

with 60°-cone
and sealing shoulder form B
BSP male - male - parallel



Thread		approx. dimensions					SW	ME Order-Code
G = BSP	G1 = BSP	L	L1	L2	D			
1/8"-28	1/8"-28	23,0	8	8	4,5	14	1050510-02-02	
1/4"-19	1/4"-19	29,0	10	10	6,0	19	1050510-04-04	
3/8"-19	3/8"-19	35,0	12	12	9,0	22	1050510-06-06	
1/2"-14	1/2"-14	41,0	14	14	13,0	27	1050510-08-08	
5/8"-14	5/8"-14	43,5	16	16	14,5	30	1050510-10-10	
3/4"-14	3/4"-14	46,0	16	16	18,0	32	1050510-12-12	
1"-11	1"-11	52,0	18	18	23,5	41	1050510-16-16	
1 1/4"-11	1 1/4"-11	58,0	20	20	30,0	50	1050510-20-20	
1 1/2"-11	1 1/2"-11	61,0	22	22	37,0	55	1050510-24-24	
2"-11	2"-11	61,0	22	22	45,0	70	1050510-32-32	
2 1/2"-11	2 1/2"-11	69,0	26	26	51,0	80	1050510-40-40	

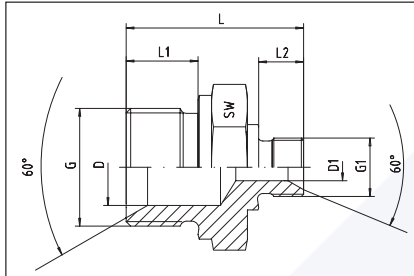
BSP - BSP - flat face
with sealing shoulder form B
male - male - parallel



Thread		approx. dimensions					SW	ME Order-Code
G = BSP	G1 = BSP	L	L1	L2	D			
1/8"-28	1/8"-28	23,0	8	8	4,5	14	1050521-02-02	
1/4"-19	1/4"-19	29,0	10	10	6,0	19	1050521-04-04	
3/8"-19	3/8"-19	35,0	12	12	9,0	22	1050521-06-06	
1/2"-14	1/2"-14	41,0	14	14	13,0	27	1050521-08-08	
5/8"-14	5/8"-14	43,5	16	16	14,5	30	1050521-10-10	
3/4"-14	3/4"-14	46,0	16	16	18,0	32	1050521-12-12	
1"-11	1"-11	52,0	18	18	23,5	41	1050521-16-16	
1 1/4"-11	1 1/4"-11	58,0	20	20	30,0	50	1050521-20-20	
1 1/2"-11	1 1/2"-11	61,0	22	22	37,0	55	1050521-24-24	
2"-11	2"-11	61,0	22	22	45,0	70	1050521-32-32	
2 1/2"-11	2 1/2"-11	69,0	26	26	51,0	80	1050521-40-40	

STRAIGHT ADAPTORS

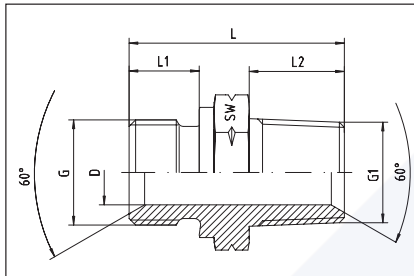
with 60°-cone
and sealing shoulder form B
BSP male - male



Thread		approx. dimensions						ME Order-Code
G = BSP	G1 = BSP	L	L1	L2	D	D1	SW	G x G1
1/4"-19	1/8"-28	28,0	12,0	8	6,0	4,5	19	1050510-04-02
3/8"-19	1/8"-28	30,5	12,0	8	9,0	4,5	22	1050510-06-02
3/8"-19	1/4"-19	33,0	12,0	11	9,0	7,0	22	1050510-06-04
1/2"-14	1/4"-19	38,0	14,0	11	12,5	7,0	27	1050510-08-04
1/2"-14	3/8"-19	40,0	14,0	12	13,0	9,0	27	1050510-08-06
5/8"-14	3/8"-19	39,6	16,0	12	14,5	8,0	30	1050510-10-06
5/8"-14	1/2"-14	42,0	16,0	14	14,5	11,5	30	1050510-10-08
3/4"-14	1/4"-19	39,5	16,0	10	18,0	6,0	32	1050510-12-04
3/4"-14	3/8"-19	41,0	16,0	12	18,0	9,0	32	1050510-12-06
3/4"-14	1/2"-14	45,0	16,0	14	18,0	13,0	32	1050510-12-08
3/4"-14	5/8"-14	45,0	16,0	16	17,0	14,5	32	1050510-12-10
1"-11	3/8"-19	47,0	18,0	12	23,0	9,0	41	1050510-16-06
1"-11	1/2"-14	48,0	18,0	14	23,5	13,0	41	1050510-16-08
1"-11	3/4"-14	53,0	18,0	16	23,5	17,0	41	1050510-16-12
1 1/4"-11	1/2"-14	51,0	20,0	14	30,0	13,0	50	1050510-20-08
1 1/4"-11	3/4"-14	53,5	20,0	16	30,5	18,0	50	1050510-20-12
1 1/4"-11	1"-11	58,0	20,0	18	30,5	23,0	50	1050510-20-16
1 1/2"-11	3/4"-14	55,0	22,0	16	37,0	17,0	55	1050510-24-12
1 1/2"-11	1"-11	57,0	22,0	18	37,0	23,5	55	1050510-24-16
1 1/2"-11	1 1/4"-11	61,0	22,0	20	37,0	30,0	55	1050510-24-20
2"-11	1"-11	59,0	22,0	18	43,0	23,5	70	1050510-32-16
2"-11	1 1/4"-11	59,0	22,0	20	45,0	30,0	70	1050510-32-20
2"-11	1 1/2"-11	61,0	22,0	22	45,0	37,0	70	1050510-32-24

STRAIGHT ADAPTORS

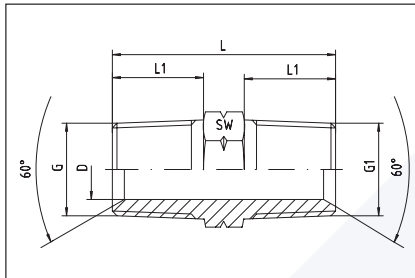
BSP - male
with 60°-cone
NPT - male
with 60°-cone



Thread		approx. dimensions					ME Order-Code BSP x NPT
G = BSP	G1 = NPT	L	L1	L2	D	SW	
1/8"-28	1/8"-27	24,5	8	10,0	4,0	14	1052810-02-02
1/4"-19	1/4"-18	32,5	10	15,0	6,0	19	1052810-04-04
3/8"-19	3/8"-18	38,0	12	15,3	9,0	22	1052810-06-06
1/2"-14	1/2"-14	43,0	14	20,0	12,5	27	1052810-08-08
3/4"-14	3/4"-14	47,0	16	20,0	17,5	32	1052810-12-12
1"-11	1"-11,5	54,5	18	25,0	22,5	41	1052810-16-16
1 1/4"-11	1 1/4"-11,5	66,0	20	25,5	30,0	50	1052810-20-20
1 1/2"-11	1 1/2"-11,5	64,0	22	26,0	37,0	55	1052810-24-24
2"-11	2"-11,5	66,0	22	26,0	45,0	70	1052810-32-32
1/4"-19	1/8"-27	27,5	10	10,0	4,0	19	1052810-04-02
1/4"-19	3/8"-18	33,0	10	15,3	6,0	19	1052810-04-06
1/4"-19	1/2"-14	40,0	10	20,0	6,0	22	1052810-04-08
3/8"-19	1/4"-18	35,5	12	15,0	7,0	22	1052810-06-04
3/8"-19	1/2"-14	42,0	12	20,0	9,0	22	1052810-06-08
3/8"-19	3/4"-14	42,0	12	20,0	9,0	27	1052810-06-12
1/2"-14	1/4"-18	40,0	14	15,0	7,0	27	1052810-08-04
1/2"-14	3/8"-18	40,0	14	15,3	9,0	27	1052810-08-06
1/2"-14	3/4"-14	45,0	14	20,0	12,0	27	1052810-08-12
3/4"-14	1/2"-14	45,0	16	20,0	12,5	32	1052810-12-08
1"-11	3/4"-14	50,0	18	20,0	15,0	41	1052810-16-12

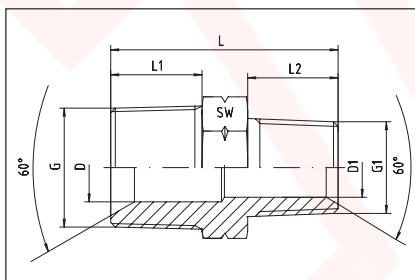
STRAIGHT ADAPTORS

NPT - male
with 60°-cone



Thread		approx. dimensions				ME Order-Code
G = NPT	G1 = NPT	L	L1	D	SW	
1/8"-27	1/8"-27	27,0	10,0	5,0	12	1282810-02-02
1/4"-18	1/4"-18	36,5	15,0	7,0	14	1282810-04-04
3/8"-18	3/8"-18	36,5	15,3	9,0	19	1282810-06-06
1/2"-14	1/2"-14	48,4	20,0	13,5	22	1282810-08-08
3/4"-14	3/4"-14	50,0	20,0	18,0	27	1282810-12-12
1"-11,5	1"-11,5	59,0	25,0	21,0	36	1282810-16-16
1 1/4"-11,5	1 1/4"-11,5	63,0	25,5	31,5	46	1282810-20-20
1 1/2"-11,5	1 1/2"-11,5	65,0	26,0	36,0	50	1282810-24-24
2"-11,5	2"-11,5	68,0	26,0	46,0	65	1282810-32-32

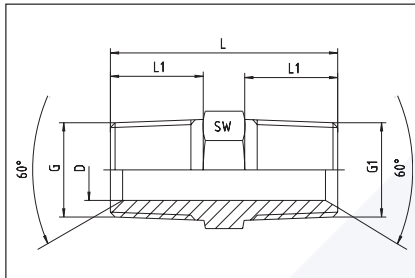
NPT - male
with 60°-cone



Thread		approx. dimensions						ME Order-Code
G = NPT	G1 = NPT	L	L1	L2	D	D1	SW	
1/4"-18	1/8"-27	32,0	15,0	10,0	7,0	5,0	14	1282810-04-02
3/8"-18	1/4"-18	36,5	15,3	15,0	7,0	7,0	19	1282810-06-04
1/2"-14	1/4"-18	43,0	20,0	15,0	7,0	7,0	22	1282810-08-04
1/2"-14	3/8"-18	43,7	20,0	15,3	13,5	8,0	22	1282810-08-06
3/4"-14	1/2"-14	50,0	20,0	20,0	18,0	13,5	27	1282810-12-08
1"-11,5	1/2"-14	54,0	25,0	20,0	21,0	13,5	36	1282810-16-08
1"-11,5	3/4"-14	54,2	25,0	20,0	21,0	18,0	36	1282810-16-12

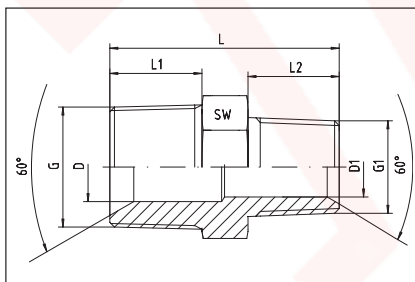
STRAIGHT ADAPTORS

BSP - taper
BSP - taper



Thread		approx. dimensions				ME Order-Code
G = BSPT	G1 = BSPT	L	L1	D	SW	
1/8"-28	1/8"-28	22,0	8	4,0	12	1070710-02-02
1/4"-19	1/4"-19	30,0	12	5,0	14	1070710-04-04
3/8"-19	3/8"-19	31,0	12	8,0	19	1070710-06-06
1/2"-14	1/2"-14	36,0	19	12,5	24	1070710-08-08
3/4"-14	3/4"-14	39,5	19	18,0	27	1070710-12-12
1"-11	1"-11	47,0	18	22,5	36	1070710-16-16
1 1/4"-11	1 1/4"-11	52,0	20	29,0	46	1070710-20-20
1 1/2"-11	1 1/2"-11	58,0	22	33,5	50	1070710-24-24
2"-11	2"-11	68,0	26	46,0	65	1070710-32-32

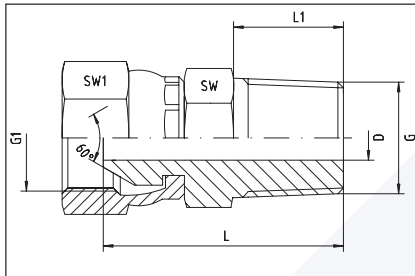
BSP - taper
BSP - taper



Thread		approx. dimensions						ME Order-Code
G = BSPT	G1 = BSPT	L	L1	L2	D	D1	SW	
1/4"-19	1/8"-28	26,0	12	8	5,0	5,0	14	1070710-04-02
3/8"-19	1/4"-19	31,0	12	12	8,0	8,0	19	1070710-06-04
1/2"-14	3/8"-19	34,0	19	12	11,5	8,0	24	1070710-08-06
3/4"-14	1/2"-14	39,0	19	19	17,0	11,5	27	1070710-12-08
1"-11	3/4"-14	45,0	18	19	22,5	17,0	36	1070710-16-12
1 1/4"-11	1"-11	50,0	20	18	29,0	22,5	46	1070710-20-16
1 1/2"-11	1 1/4"-11	56,0	22	20	33,5	33,5	50	1070710-24-20

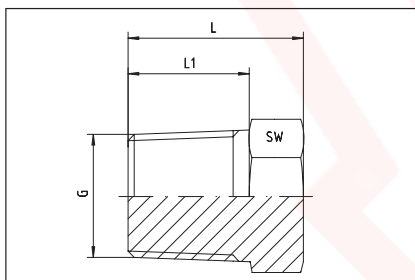
STRAIGHT ADAPTORS

BSP - female
with swivel nut for 60°-connection
BSPT - taper - male



Thread		approx. dimensions					ME Order-Code
G1 = BSP	G = BSPT	L	L1	D	SW	SW1	
1/8"-28	1/8"-28	23,0	8	4,0	12	14	2070511-02-02
1/4"-19	1/4"-19	28,0	12	5,0	14	19	2070511-04-04
3/8"-19	3/8"-19	30,6	12	8,0	19	22	2070511-06-06
1/2"-14	1/2"-14	42,0	19	9,5	24	27	2070511-08-08
3/4"-14	3/4"-14	43,0	19	16,5	30	32	2070511-12-12
1"-11	1"-11	44,3	18	22,5	36	41	2070511-16-16
1 1/4"-11	1 1/4"-11	51,9	20	29,0	45	50	2070511-20-20
1 1/2"-11	1 1/2"-11	54,6	22	33,5	50	55	2070511-24-24
2"-11	2"-11	57,9	26	46,0	65	70	2070511-32-32

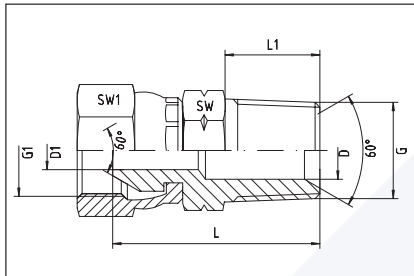
BSPT-TAPER-PLUG



Thread G = BSPT	approx. dimensions			ME Order-Code
	L	L1	SW	
1/8"-28	14	8	12	5070010-02
1/4"-19	18	12	14	5070010-04
3/8"-19	19	12	17	5070010-06
1/2"-14	27	19	22	5070010-08
3/4"-14	29	19	27	5070010-12
1"-11	29	18	36	5070010-16
1 1/4"-11	32	20	46	5070010-20
1 1/2"-11	36	22	50	5070010-24
2"-11	40	26	65	5070010-32

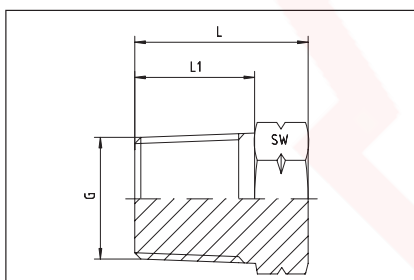
STRAIGHT ADAPTORS

BSP - female
with swivel nut for 60°-connection
NPT - male



Thread		approx. dimensions						ME Order-Code
G1 = BSP	G = NPT	L	L1	D	D1	SW	SW1	BSP x NPT
1/8"-28	1/8"-27		10,0					2280511-02-02
1/4"-19	1/4"-18	32,0	15,0	7,0	5,0	14	19	2280511-04-04
3/8"-19	3/8"-18	33,0	15,3	10,0	8,0	19	22	2280511-06-06
1/2"-14	1/2"-14	42,0	20,0	13,5	9,5	22	27	2280511-08-08
3/4"-14	3/4"-14	43,0	20,0	16,5	16,5	27	32	2280511-12-12
1"-11	1"-11	49,5	25,0	24,0	21,0	36	41	2280511-16-16
1 1/4"-11	1 1/4"-11,5	53,0	25,5	28,0	28,0	46	50	2280511-20-20
1 1/2"-11	1 1/2"-11,5	57,0	26,0	32,5	32,5	50	55	2280511-24-24
2"-11	2"-11,5		26,0			65	70	2280511-32-32
3/8"-19	1/4"-18	33,6	15,0	7,0	7,0	17	22	2280511-06-04
1/4"-19	3/8"-18	32,0	15,3	10,3	5,0	19	19	2280511-04-06
1/2"-14	3/8"-18	34,8	15,3	10,3	9,5	19	27	2280511-08-06
3/8"-19	1/2"-14	40,8	20,0	13,5	8,0	22	22	2280511-06-08
1/2"-14	3/4"-14	41,0	20,0	16,5	9,5	27	27	2280511-08-12
3/4"-14	1"-11,5		25,0			36	32	2280511-12-16

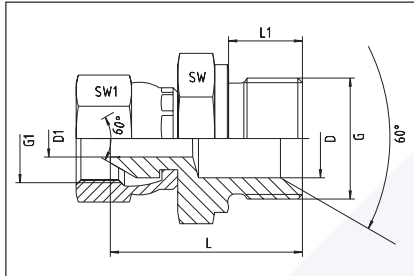
NPT-PLUG



Thread	approx. dimensions			ME Order-Code
G = NPT	L	L1	SW	
1/8"-27	15	10,0	12	5280010-02
1/4"-18	20	15,0	14	5280010-04
3/8"-18	22	15,3	17	5280010-06
1/2"-14	27	20,0	22	5280010-08
3/4"-14	29	20,0	27	5280010-12
1"-11,5	33	25,0	36	5280010-16
1 1/4"-11,5	33	25,5	46	5280010-20
1 1/2"-11,5	41	26,0	50	5280010-24
2"-11,5	44	26,0	65	5280010-32

STRAIGHT ADAPTORS

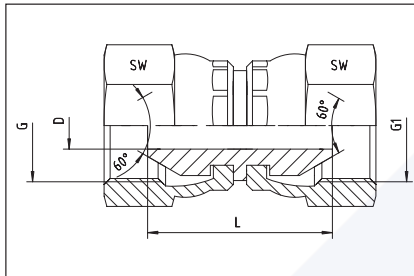
BSP - female
with swivel nut
BSP - male
with 60°-cone and sealing shoulder form B



Thread		approx. dimensions							ME Order-Code
G1	G	L	L1	D	D1	SW	SW1	G1 x G	
1/8"-28	1/8"-28	23,5	8	4,0	4,0	14	14	2050511-02-02	
1/4"-19	1/8"-28	27,0	8	4,0	4,0	14	19	2050511-04-02	
3/8"-19	1/8"-28	26,0	8	4,5	4,5	17	19	2050511-06-02	
1/8"-28	1/4"-19	27,5	12	4,0	4,0	19	14	2050511-02-04	
1/4"-19	1/4"-19	30,0	12	5,0	5,0	19	19	2050511-04-04	
3/8"-19	1/4"-19	31,5	12	5,0	8,0	19	22	2050511-06-04	
1/2"-14	1/4"-19	31,5	12	5,0	11,0	19	27	2050511-08-04	
1/4"-19	3/8"-19	31,5	12	9,0	5,0	22	19	2050511-04-06	
3/8"-19	3/8"-19	32,5	12	8,0	8,0	22	22	2050511-06-06	
1/2"-14	3/8"-19	32,5	12	9,0	9,0	22	27	2050511-08-06	
1/4"-19	1/2"-14	35,5	14	11,5	5,0	27	19	2050511-04-08	
3/8"-19	1/2"-14	37,0	14	11,5	8,0	27	22	2050511-06-08	
1/2"-14	1/2"-14	36,0	14	11,0	11,0	27	27	2050511-08-08	
3/4"-14	1/2"-14	42,0	14	11,5	16,0	27	32	2050511-12-08	
1/2"-14	3/4"-14	39,5	16	11,0	11,0	32	27	2050511-08-12	
3/4"-14	3/4"-14	41,0	16	16,5	16,5	32	32	2050511-12-12	
1"-11	3/4"-14	44,0	18	17,0	22,0	32	41	2050511-16-12	
3/4"-14	1"-11	45,0	18	22,5	16,5	41	32	2050511-12-16	
1"-11	1"-11	45,5	18	22,0	22,0	41	41	2050511-16-16	
1 1/4"-11	1"-11	53,0	18	22,0	22,0	41	50	2050511-20-16	
1"-11	1 1/4"-11	49,5	20	29,0	22,5	50	41	2050511-16-20	
1 1/4"-11	1 1/4"-11	48,5	20	28,0	28,0	50	50	2050511-20-20	
1 1/2"-11	1 1/2"-11	53,0	22	33,0	33,0	55	55	2050511-24-24	
2"-11	2"-11	72,0	23	42,0	42,0	70	70	2050511-32-32	

STRAIGHT ADAPTORS - DKR

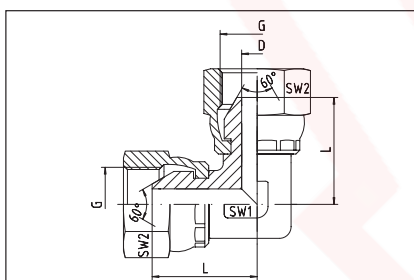
female - BSP - BSP
with swivel nut at both sides



Thread		approx. dimensions			ME Order-Code
G	G1	L	D	SW	
1/8"-28	1/8"-28	21	4,0	14	3050511-02-02
1/4"-19	1/4"-19	26	5,0	19	3050511-04-04
3/8"-19	3/8"-19	30	8,0	22	3050511-06-06
1/2"-14	1/2"-14	29	11,0	27	3050511-08-08
3/4"-14	3/4"-14	34	16,5	32	3050511-12-12
1"-11	1"-11	36	22,0	41	3050511-16-16
1 1/4"-11	1 1/4"-11	38	28,0	50	3050511-20-20
1 1/2"-11	1 1/2"-11	51	34,0	55	3050511-24-24
2"-11	2"-11	66	42,0	70	3050511-32-32

ELBOW-ADAPTORS - DKR

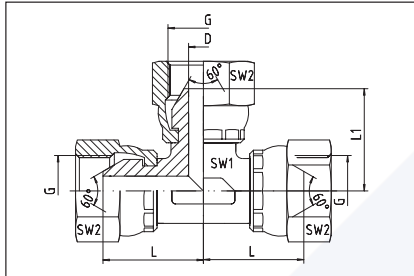
female - BSP - BSP
with swivel nut at both sides



Thread G	approx. dimensions				ME Order-Code
	L	D	SW1	SW2	
1/8"-28	18,0	4,0	12	14	4050511-02
1/4"-19	23,5	6,0	14	19	4050511-04
3/8"-19	25,5	8,0	17	22	4050511-06
1/2"-14	29,5	11,0	19	27	4050511-08
3/4"-14	37,0	16,0	27	32	4050511-12
1"-11	43,0	22,0	36	41	4050511-16
1 1/4"-11	51,0	28,0	41	50	4050511-20
1 1/2"-11	50,0	33,5	50	55	4050511-24
2"-11				70	4050511-32

T-ADAPTORS - DKR

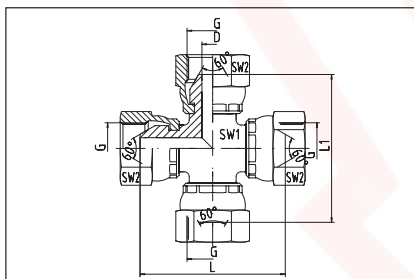
female - BSP - BSP - BSP
with swivel nut at all sides



Thread G	approx. dimensions					ME Order-Code
	L	L1	D	SW1	SW2	
1/8"-28	18,0	18,0	4,0	12	14	4150511-02
1/4"-19	23,5	23,5	6,0	14	19	4150511-04
3/8"-19	25,5	25,5	8,0	17	22	4150511-06
1/2"-14	29,5	29,5	11,0	19	27	4150511-08
3/4"-14	37,0	37,0	16,0	27	32	4150511-12
1"-11	43,0	43,0	22,0	36	41	4150511-16
1 1/4"-11	51,0	51,0	28,0	41	50	4150511-20
1 1/2"-11	50,0	50,0	33,5	50	55	4150511-24
2"-11					70	4150511-32

K-ADAPTORS - DKR

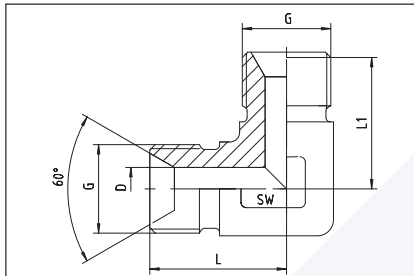
female - BSP - all sides
with swivel nut at all sides



Thread G	approx. dimensions					ME Order-Code
	L	L1	D	SW1	SW2	
1/8"-28						4250511-02
1/4"-19					19	4250511-04
3/8"-19					22	4250511-06
1/2"-14					27	4250611-08
3/4"-14					32	4250511-12
1"-11					41	4250511-16
1 1/4"-11					50	4250511-20
1 1/2"-11					55	4250511-24
2"-11					70	4250511-32

ELBOW-ADAPTORS

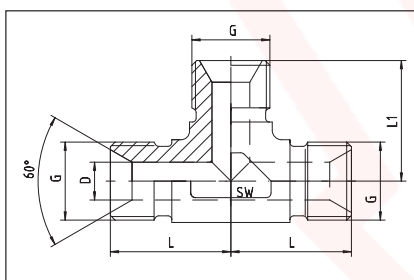
male - BSP - BSP



Thread G	approx. dimensions				ME Order-Code
	L	L1	D	SW	
1/8"-28	20,0	20,0	4,0	12	1350510-02
1/4"-19	24,5	24,5	6,0	14	1350510-04
3/8"-19	25,5	25,5	8,0	17	1350510-06
1/2"-14	29,5	29,5	11,0	19	1350510-08
3/4"-14	37,0	37,0	16,0	27	1350510-12
1"-11	43,0	43,0	22,0	36	1350510-16
1 1/4"-11	51,0	51,0	28,5	41	1350510-20
1 1/2"-11	59,0	59,0	33,5	50	1350510-24
2"-11					1350510-32

T-ADAPTORS

male - BSP - BSP - BSP



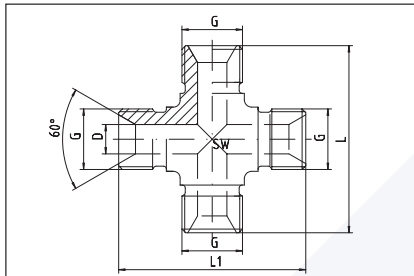
Thread G	approx. dimensions				ME Order-Code
	L	L1	D	SW	
1/8"-28	20,0	20,0	4,0	12	1450510-02
1/4"-19	24,5	24,5	6,0	14	1450510-04
3/8"-19	25,5	25,5	8,0	17	1450510-06
1/2"-14	29,5	29,5	11,0	19	1450510-08
3/4"-14	37,0	37,0	16,0	27	1450510-12
1"-11	43,0	43,0	22,0	36	1450510-16
1 1/4"-11	51,0	51,0	28,5	41	1450510-20
1 1/2"-11	59,0	59,0	33,5	50	1450510-24
2"-11					1450510-32

KREUZ-ADAPTER

CROSS-ADAPTORS

männlich - BSP - alle Seiten

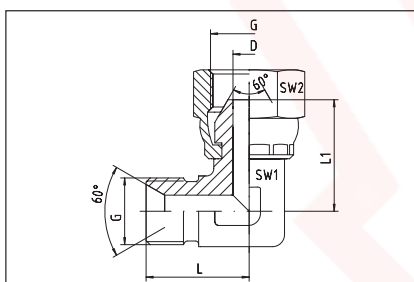
male - BSP - all sides



Thread G	approx. dimensions				ME Order-Code
	L	L1	D	SW	
1/8"-28					1550510-02
1/4"-19					1550510-04
3/8"-19					1550510-06
1/2"-14					1550510-08
3/4"-14					1550510-12
1"-11					1550510-16
1 1/4"-11					1550510-20
1 1/2"-11					1550510-24
2"-11					1550510-32

WE-BLOCK-ELBOW-ADAPTORS

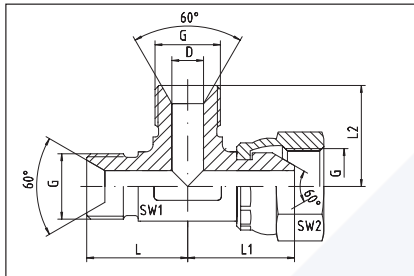
male - fixed
female - with swivel nut



Thread G	approx. dimensions					ME Order-Code
	L	L1	D	SW1	SW2	
1/8"-28	20,0	18,0	4,0	12	14	1560510-02
1/4"-19	24,5	23,5	6,0	14	19	1560510-04
3/8"-19	25,5	25,5	8,0	17	22	1560510-06
1/2"-14	29,5	29,5	11,0	19	27	1560510-08
3/4"-14	37,0	37,0	16,0	27	32	1560510-12
1"-11	43,0	43,0	22,0	36	41	1560510-16
1 1/4"-11	51,0	51,0	28,0	41	50	1560510-20
1 1/2"-11	59,0	50,0	33,5	50	55	1560510-24
2"-11						1560510-32

LE-ADAPTORS

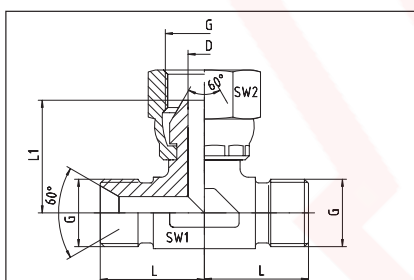
male - fixed - BSP
female - swivel - BSP



Thread G	approx. dimensions						ME Order-Code
	L	L1	L2	D	SW1	SW2	
1/8"-28	20,0	18,0	20,0	4,0	12	14	1570510-02
1/4"-19	24,5	24,5	24,5	6,0	14	19	1570510-04
3/8"-19	25,5	25,5	25,5	8,0	17	22	1570510-06
1/2"-14	29,5	29,5	29,5	11,0	19	27	1570510-08
3/4"-14	37,0	37,0	37,0	16,0	27	32	1570510-12
1"-11	43,0	43,0	43,0	22,0	36	41	1570510-16
1 1/4"-11	51,0	51,0	51,0	28,0	41	50	1570510-20
1 1/2"-11	59,0	50,0	59,0	33,5	50	55	1570510-24
2"-11							1570510-32

TE-ADAPTORS

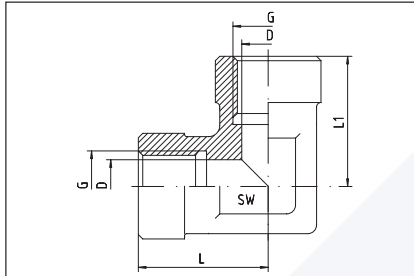
male - fixed - BSP
female - swivel - BSP



Thread G	approx. dimensions					ME Order-Code
	L	L1	D	SW1	SW2	
1/8"-28	20,0	18,0	4,0	12	14	1580510-02
1/4"-19	24,5	23,5	6,0	14	19	1580510-04
3/8"-19	25,5	25,5	8,0	17	22	1580510-06
1/2"-14	29,5	29,5	11,0	19	27	1580510-08
3/4"-14	37,0	37,0	16,0	27	32	1580510-12
1"-11	43,0	43,0	22,0	36	41	1580510-16
1 1/4"-11	51,0	51,0	28,0	41	50	1580510-20
1 1/2"-11	59,0	50,0	33,5	50	55	1580510-24
2"-11						1580510-32

ELBOW-ADAPTORS

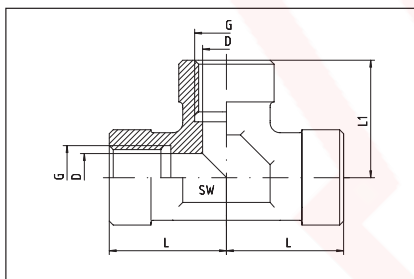
female - BSP parallel - BSP parallel - fixed



Thread G	approx. dimensions				ME Order-Code
	L	L1	D	SW	
1/8"-28					1350520-02
1/4"-19					1350520-04
3/8"-19					1350520-06
1/2"-14					1350520-08
3/4"-14					1350520-12
1"-11					1350520-16
1 1/4"-11					1350520-20
1 1/2"-11					1350520-24
2"-11					1350520-32

T-ADAPTORS

female - BSP parallel - BSP parallel - BSP parallel - fixed

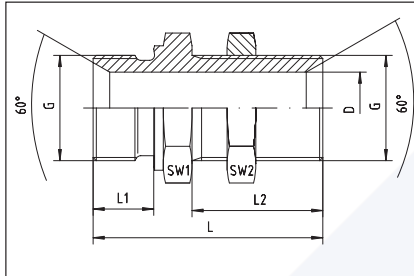


Thread G	approx. dimensions				ME Order-Code
	L	L1	D	SW	
1/8"-28					1450520-02
1/4"-19					1450520-04
3/8"-19					1450520-06
1/2"-14					1450520-08
3/4"-14					1450520-12
1"-11					1450520-16
1 1/4"-11					1450520-20
1 1/2"-11					1450520-24
2"-11					1450520-32

STRAIGHT BULKHEAD ADAPTORS

BSP male - BSP male

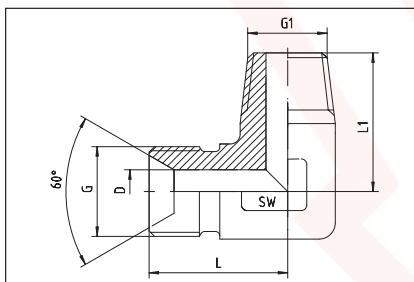
both sides with 60°-cone and backnut



Thread G	approx. dimensions						ME Order-Code
	L	L1	L2	D	SW1	SW2	
1/8"-28	42,5	8	28	4,5	14	14	1050511-02
1/4"-19	46,0	11	28	6,0	19	19	1050511-04
3/8"-19	52,0	12	32	8,0	22	22	1050511-06
1/2"-14	59,0	14	35	11,0	27	27	1050511-08
5/8"-14	63,0	16	35	14,5	30	30	1050511-10
3/4"-14	66,0	16	38	16,5	32	32	1050511-12
1"-11	72,0	19	41	22,5	41	41	1050511-16
1 1/4"-11	78,0	20	44	30,5	50	50	1050511-20
1 1/2"-11	84,0	22	48	37,0	55	55	1050511-24
2"-11	91,0	23	48	46,0	70	70	1050511-32

ELBOW-ADAPTORS

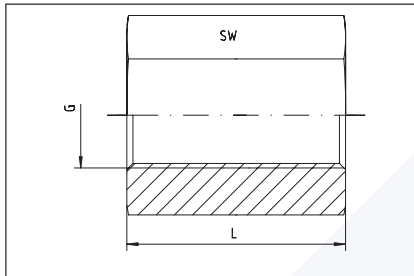
BSP male
with 60°-cone
BSP - taper - male



Thread		approx. dimensions				ME Order-Code
G = BSP zyl.	G1 = keg.	L	L1	D	SW	
1/8"-28	1/8"-28					1350500-02
1/4"-19	1/4"-19					1350500-04
3/8"-19	3/8"-19					1350500-06
1/2"-14	1/2"-14					1350500-08
3/4"-14	3/4"-14					1350500-12
1"-11	1"-11					1350500-16
1 1/4"-11	1 1/4"-11					1350500-20
1 1/2"-11	1 1/2"-11					1350500-24
2"-11	2"-11					1350500-32

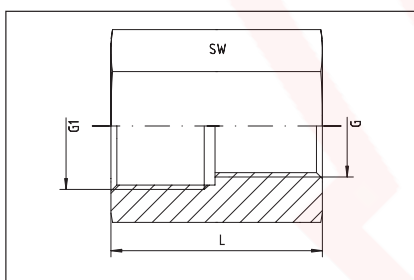
HEXAGON SOCKETS

for high pressure
Thread: BSPP



Pressure PN	Thread G	approx. dimensions		ME Order-Code
		L	SW	
630	1/8"-28	18	14	1050512-02-02
630	1/4"-19	25	17	1050512-04-04
630	3/8"-19	26	22	1050512-06-06
400	1/2"-14	34	27	1050512-08-08
400	3/4"-14	36	32	1050512-12-12
400	1"-11	43	41	1050512-16-16
315	1 1/4"-11	48	50	1050512-20-20
315	1 1/2"-11	48	55	1050512-24-24
250	2"-11	56	70	1050512-32-32

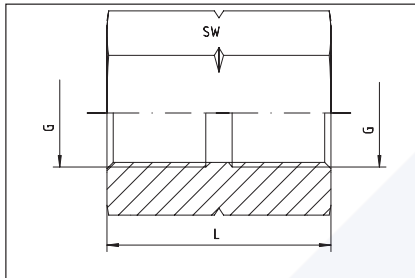
for high pressure
Thread: BSPP



Pressure PN	Thread G1 x G	approx. dimensions		ME Order-Code
		L	SW	
630	1/4" x 1/8"	25	17	1050512-04-02
630	3/8" x 1/4"	32	22	1050512-06-04
400	1/2" x 3/8"	35	27	1050512-08-06
400	1/2" x 1/4"	35	27	1050512-08-04
400	3/4" x 1/2"	38	32	1050512-12-08
400	3/4" x 3/8"	38	32	1050512-12-06
400	1" x 3/4"	42	41	1050512-16-12
400	1" x 1/2"	42	41	1050512-16-08
315	1 1/4" x 1"	48	50	1050512-20-16
315	1 1/2" x 1 1/4"	48	55	1050512-24-20
250	2" x 1 1/2"	56	70	1050512-32-24

HEXAGON SOCKETS

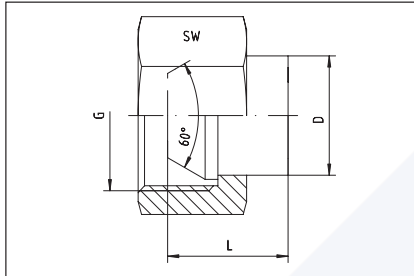
for high pressure
NPT-internal thread



Pressure PN	Thread G = NPT	approx. dimensions		ME Order-Code
		L	SW	
630	1/8"-27	18	14	1050516-02
630	1/4"-18	25	17	1050516-04
630	3/8"-18	26	22	1050516-06
630	1/2"-14	34	27	1050516-08
400	3/4"-14	36	32	1050516-12
400	1"-11,5	43	41	1050516-16
400	1 1/4"-11,5	59	50	1050516-20
400	1 1/2"-11,5	59	55	1050516-24
315	2"-11,5	59	70	1050516-32

BSP-FEMALE-SWIVEL CAPS

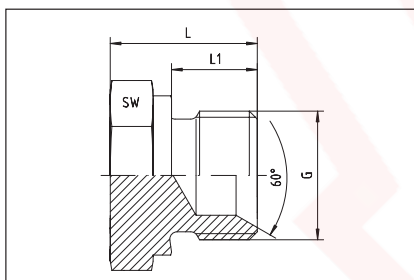
for BSP-thread
with 60°-cone



Thread G = BSP	approx. dimensions			ME Order-Code
	L	D	SW	
1/8"-28	11		14	1050513-02
1/4"-19	15	9,0	17	1050513-04
3/8"-19	15	12,4	19	1050513-06
1/2"-14	17	16,4	27	1050513-08
5/8"-14				1050513-10
3/4"-14	19	21,3	32	1050513-12
1"-11	20	27,8	41	1050513-16
1 1/4"-11	22	36,0	50	1050513-20
1 1/2"-11	25		55	1050513-24
2"-11	31	54,5	70	1050513-32

BSP-60°-CONED PLUG

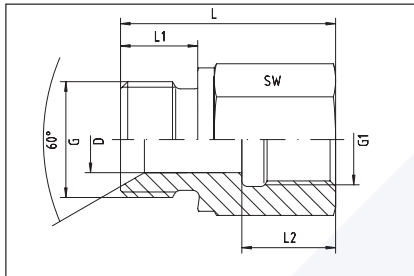
with hexagon and 60°-cone
and sealing shoulder form B



Thread G = BSP	approx. dimensions			ME Order-Code
	L	L1	SW	
1/8"-28	14,0	8	14	1050514-02
1/4"-19	17,0	10	19	1050514-04
3/8"-19	20,5	12	22	1050514-06
1/2"-14	24,0	14	27	1050514-08
5/8"-14				1050514-10
3/4"-14	27,0	16	32	1050514-12
1"-11	31,0	18	41	1050514-16
1 1/4"-11	33,0	20	50	1050514-20
1 1/2"-11	36,0	22	55	1050514-24
2"-11	36,0	22	70	1050514-32

HEXAGON-ADAPTORS

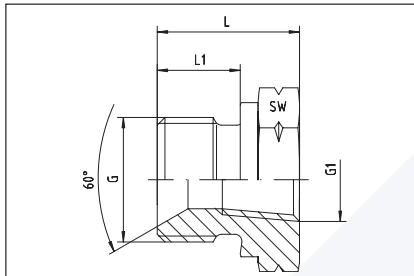
with 60°-cone
and sealing shoulder form B
BSP male - BSP female



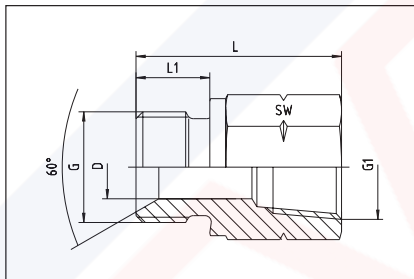
Thread		approx. dimensions					ME Order-Code
G = BSP	G1 = BSP	L	L1	L2	D	SW	
1/8"-28	1/8"-28	23,5	8	11,0	4,5	17	1050515-02-02
1/4"-19	1/4"-19	32,0	10	17,0	6,0	19	1050515-04-04
3/8"-19	3/8"-19	36,0	12	17,0	9,0	24	1050515-06-06
1/2"-14	1/2"-14	39,0	14	20,0	12,0	27	1050515-08-08
3/4"-14	3/4"-14	45,0	16	22,5	18,0	32	1050515-12-12
1"-11	1"-11	49,5	18	24,5	22,0	41	1050515-16-16
1 1/4"-11	1 1/4"-11	58,0	20	27,0	25,0	50	1050515-20-20
1 1/2"-11	1 1/2"-11	58,0	22	27,5	37,0	55	1050515-24-24
2"-11	2"-11	64,5	23	30,5	43,0	70	1050515-32-32

MALE/FEMALE STUD ADAPTORS

BSP - male
with 60°-cone
NPT - female



Form: A

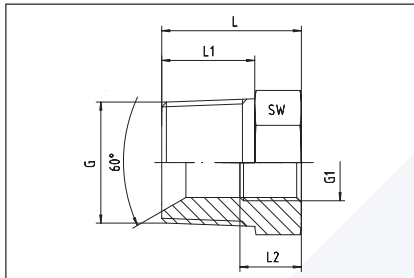


Form: B

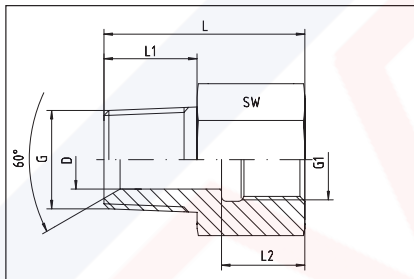
Gewinde Thread		ca. Maße approx. dimensions				Form Form	Bestellzeichen Order-Code
G = BSP	G1 = NPT	L	L1	D	SW		
1/8"-28	1/8"-27	25,0	8	4,0	14	B	1050518-02-02
1/8"-28	1/4"-18	31,0	8	4,0	19	B	1050518-02-04
1/4"-19	1/8"-27					B	1050518-04-02
1/4"-19	1/4"-18	32,0	12	6,0	19	B	1050518-04-04
1/4"-19	3/8"-18	31,0	10	7,0	24	B	1050518-04-06
1/4"-19	1/2"-14	38,0	10	7,0	27	B	1050518-04-08
3/8"-19	1/4"-18	36,0	12	9,0	22	B	1050518-06-04
3/8"-19	3/8"-18	36,0	12	9,0	24	B	1050518-06-06
3/8"-19	1/2"-14	37,0	12	9,0	27	B	1050518-06-08
1/2"-14	1/4"-18	24,0	14	11,5	27	A	1050518-08-04
1/2"-14	3/8"-18	32,5	14	12,0	27	A	1050518-08-06
1/2"-14	1/2"-14	39,0	14	12,0	27	B	1050518-08-08
1/2"-14	3/4"-14	46,0	14	13,0	36	B	1050518-08-12
3/4"-14	3/8"-18	30,0	16	14,5	32	A	1050518-12-06
3/4"-14	1/2"-14	44,0	16	18,0	32	A	1050518-12-08
3/4"-14	3/4"-14	48,0	16	18,0	36	B	1050518-12-12
3/4"-14	1"-11,5					B	1050518-12-16
1"-11	1/2"-14	31,0	18	18,0	41	A	1050518-16-08
1"-11	3/4"-14	32,0	18	23,0	41	A	1050518-16-12
1"-11	1"-11,5	49,5	18	22,0	41	B	1050518-16-16
1 1/4"-11	3/4"-14	37,0	20	22,5	50	A	1050518-20-12
1 1/4"-11	1"-11,5	37,0	20	33,0	50	A	1050518-20-16
1 1/4"-11	1 1/4"-11,5	58,0	20	25,0	50	B	1050518-20-20
1 1/2"-11	1"-11,5	39,0	22	28,5	55	A	1050518-24-16
1 1/2"-11	1 1/4"-11,5					A	1050518-24-20
1 1/2"-11	1 1/2"-11,5	62,0	22	37,0	55	B	1050518-24-24
2"-11	2"-11,5					B	1050518-32-32

MALE/FEMALE STUD ADAPTORS

NPT - male
with 60°-cone
BSP - female



Form: A

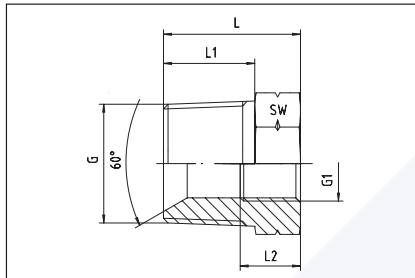


Form: B

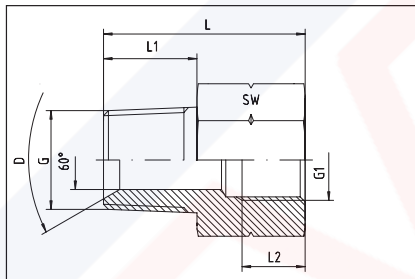
Thread		approx. dimensions					Form	ME Order-Code
G = NPT	G1 = BSP	L	L1	L2	D	SW		
1/8"-27	1/8"-28	25,0	10,0	12,0	4	14	B	1050517-02-02
1/8"-27	1/4"-19	30,0	10,0	17,0	4	19	B	1050517-02-04
1/4"-18	1/8"-28	30,0	15,0	12,0	6	14	B	1050517-04-02
1/4"-18	1/4"-19	34,0	15,0	17,0	6	19	B	1050517-04-04
1/4"-18	3/8"-19	35,0	15,0	17,0	6	24	B	1050517-04-06
1/4"-18	1/2"-14	36,5	15,0	20,0	5	27	B	1050517-04-08
3/8"-18	1/4"-19	35,0	15,0	17,0	9	19	B	1050517-06-04
3/8"-18	3/8"-19	35,0	15,0	17,0	9	24	B	1050517-06-06
3/8"-18	1/2"-14	37,0	15,0	20,0	9	27	B	1050517-06-08
1/2"-14	1/4"-19	27,0	20,0	17,0	13	24	A	1050517-08-04
1/2"-14	3/8"-19	38,0	20,0	17,0	12	24	B	1050517-08-06
1/2"-14	1/2"-14	41,0	20,0	20,0	12	27	B	1050517-08-08
1/2"-14	3/4"-14	48,0	20,0	22,5	12	32	B	1050517-08-12
3/4"-14	3/8"-19	28,0	20,0	17,0	15	27	A	1050517-12-06
3/4"-14	1/2"-14	42,0	20,0	20,0	15	27	B	1050517-12-08
3/4"-14	3/4"-14	48,0	20,0	22,5	18	32	B	1050517-12-12
3/4"-14	1"-11						B	1050517-12-16
1"-11,5	1/2"-14	34,0	25,0	20,0	19	36	A	1050517-16-08
1"-11,5	3/4"-14	54,0	25,0	22,5	21	36	B	1050517-16-12
1"-11,5	1"-11	57,0	25,0	25,0	21	41	B	1050517-16-16
1"-11,5	1 1/4"-11						B	1050517-16-20
1 1/4"-11,5	3/4"-14						A	1050517-20-12
1 1/4"-11,5	1"-11						B	1050517-20-16
1 1/4"-11,5	1 1/4"-11	55,0	25,5	27,0	30	55	B	1050517-20-20
1 1/4"-11,5	1 1/2"-11						B	1050517-20-24
1 1/2"-11,5	1"-11						A	1050517-24-16
1 1/2"-11,5	1 1/4"-11						B	1050517-24-20
1 1/2"-11,5	1 1/2"-11	63,0	26,0	27,5	36	55	B	1050517-24-24
1 1/2"-11,5	2"-11						B	1050517-24-32

MALE/FEMALE STUD ADAPTORS

NPT - male
with 60°-cone
NPT - female



Form: A

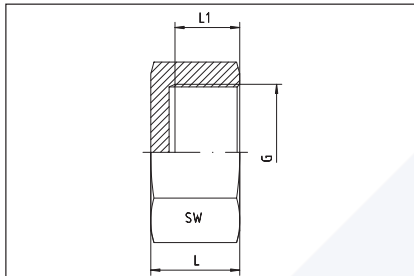


Form: B

Thread		approx. dimensions					Form	ME Order-Code
G = NPT	G1 = NPT	L	L1	L2	D	SW		
1/8"-27	1/8"-27						B	1050525-02-02
1/8"-27	1/4"-18						B	1050525-02-04
1/4"-18	1/8"-27						B	1050525-04-02
1/4"-18	1/4"-18						B	1050525-04-04
1/4"-18	3/8"-18						B	1050525-04-06
1/4"-18	1/2"-14						B	1050525-04-08
3/8"-18	1/4"-18						B	1050525-06-04
3/8"-18	3/8"-18						B	1050525-06-06
3/8"-18	1/2"-14						B	1050525-06-08
1/2"-14	1/4"-18						A	1050525-08-04
1/2"-14	3/8"-18						B	1050525-08-06
1/2"-14	1/2"-14						B	1050525-08-08
1/2"-14	3/4"-14						B	1050525-08-12
3/4"-14	3/8"-18						A	1050525-12-06
3/4"-14	1/2"-14						B	1050525-12-08
3/4"-14	3/4"-14						B	1050525-12-12
3/4"-14	1"-11,5						B	1050525-12-16
1"-11,5	1/2"-14						A	1050525-16-08
1"-11,5	3/4"-14						B	1050525-16-12
1"-11,5	1"-11,5						B	1050525-16-16
1"-11,5	1 1/4"-11,5						B	1050525-16-20
1 1/4"-11,5	3/4"-14						A	1050525-20-12
1 1/4"-11,5	1"-11,5						B	1050525-20-16
1 1/4"-11,5	1 1/4"-11,5						B	1050525-20-20
1 1/4"-11,5	1 1/2"-11,5						B	1050525-20-24
1 1/2"-11,5	1"-11,5						A	1050525-24-16
1 1/2"-11,5	1 1/4"-11,5						B	1050525-24-20
1 1/2"-11,5	1 1/2"-11,5						B	1050525-24-24
1 1/2"-11,5	2"-11,5						B	1050525-24-32

HEXAGON CAPS

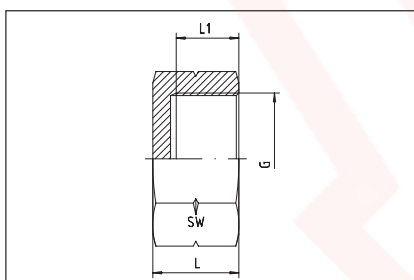
with BSP-thread female



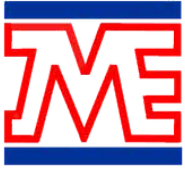
Thread G = BSP	approx. dimensions			ME Order-Code
	L	L1	SW	
1/8"-28	15,0	10,0	14	1050519-02
1/4"-19	18,0	12,5	17	1050519-04
3/8"-19	19,0	13,0	22	1050519-06
1/2"-14	21,0	14,5	27	1050519-08
5/8"-14				1050519-10
3/4"-14	24,5	18,5	32	1050519-12
1"-11	25,0	19,0	41	1050519-16
1 1/4"-11	29,0	22,0	50	1050519-20
1 1/2"-11	31,0	23,5	55	1050519-24
2"-11	32,0	24,5	70	1050519-32

HEXAGON CAPS

with NPT-thread female



Thread G = NPT	approx. dimensions			ME Order-Code
	L	L1	SW	
1/8"-27			14	1050520-02
1/4"-18			17	1050520-04
3/8"-18			22	1050520-06
1/2"-14			27	1050520-08
3/4"-14			32	1050520-12
1"-11,5			41	1050520-16
1 1/4"-11,5			50	1050520-20
1 1/2"-11,5			55	1050520-24
2"-11,5			70	1050520-32



M E HYDRAULICS PRIVATE LIMITED

adding value to customers



Exports to:

- USA
- UK
- UAE
- SWEDEN
- SINGAPORE
- KUWAIT
- ITALY
- GERMANY
- CHILE



M E HYDRAULICS PVT LTD

UNIT 4, MERCHANT IND ESTATE 1
VALIV ROAD, VASAI EAST
MUMBAI - 401208 - INDIA
Email:- info@mehydro.com

Tel: +91-9320160600
Web: www.mehydro.com

ISO 9001:2015 Certified Company

www.mehydro.com